

# **CORRECTIVE SERVICES**

AUSTRALIA

EMBARGO: 11.30AM (CANBERRA TIME) THURS 18 JUN 2009

## **CONTENTS**

	<i>page</i>
Notes .....	2
Summary of findings .....	3

## **TABLES**

<b>1</b> Persons in corrective services, summary .....	9
<b>2</b> Persons in full-time custody .....	11
<b>3</b> Imprisonment rates .....	12
<b>4</b> Persons in full-time custody, by sex .....	13
<b>5</b> Imprisonment rates, by sex .....	14
<b>6</b> Persons in full-time custody, by type of custody .....	15
<b>7</b> Imprisonment rates, by type of custody .....	16
<b>8</b> Persons in full-time custody, by legal status .....	17
<b>9</b> Imprisonment rates, by legal status .....	18
<b>10</b> Sentenced prisoner receptions into full-time custody .....	19
<b>11</b> Persons in periodic detention, by sex .....	20
<b>12</b> Federal sentenced persons in full-time custody, by sex .....	21
<b>13</b> Indigenous persons in full-time custody, by sex .....	22
<b>14</b> Indigenous imprisonment rates, by sex .....	23
<b>15</b> Indigenous persons in full-time custody, by legal status .....	24
<b>16</b> Indigenous imprisonment rates, by legal status .....	25
<b>17</b> Persons in community-based corrections, by sex .....	26
<b>18</b> Community-based corrections rates, by sex .....	27
<b>19</b> Persons in community-based corrections, by type of order .....	28

## **ADDITIONAL INFORMATION**

Explanatory Notes .....	30
Appendix Experimental Community-Based Corrections Data .....	37
Glossary .....	41

## **INQUIRIES**

For further information about these and related statistics, contact the National Information and Referral Service on 1300 135 070 or Chay Ang on Melbourne (03) 9615 7681.

# NOTES

## FORTHCOMING ISSUES

ISSUE (Quarter)

RELEASE DATE

June 2009

17 September 2009

.....

## ABOUT THIS PUBLICATION

This publication presents information on persons in custody and community-based corrections. The statistics are derived from information provided to the Australian Bureau of Statistics (ABS) from administrative records held by corrective services agencies in each state and territory, and from the Australian Government Attorney-General's Department for details on federal prisoners. Details are provided for each state and territory on: prisoner numbers and imprisonment rates by type of custody (i.e. open or secure custody or periodic detention); prisoner numbers by legal status (sentenced or unsentenced) for all prisoners and for Indigenous prisoners; the number of sentenced receptions into custody; the number of federal prisoners; and the numbers and rates of persons serving community-based corrections orders. Experimental data on the Indigenous status of persons in community-based corrections are also included in the Appendix.

The ABS acknowledges the valuable contribution of the Board of Management and the Advisory Group of the National Corrective Services Statistics Unit as well as the staff of the various agencies that provide the statistics that are presented in this publication.

## FURTHER INFORMATION

More information about ABS activities in the field of crime and justice statistics is available from the Crime and Justice theme page on the ABS website <[www.abs.gov.au](http://www.abs.gov.au)>. Details of other ABS publications relating to Crime and Justice statistics can be found in paragraphs 47-48 of the Explanatory Notes.

.....

## ABBREVIATIONS

ABS	Australian Bureau of Statistics
ACT	Australian Capital Territory
Aust.	Australia
ERP	estimated resident population
NCCJS	National Centre for Crime and Justice Statistics, Australian Bureau of Statistics
NSW	New South Wales
NT	Northern Territory
Qld	Queensland
SA	South Australia
Tas.	Tasmania
Vic.	Victoria
WA	Western Australia

Brian Pink  
Australian Statistician

## SUMMARY OF FINDINGS

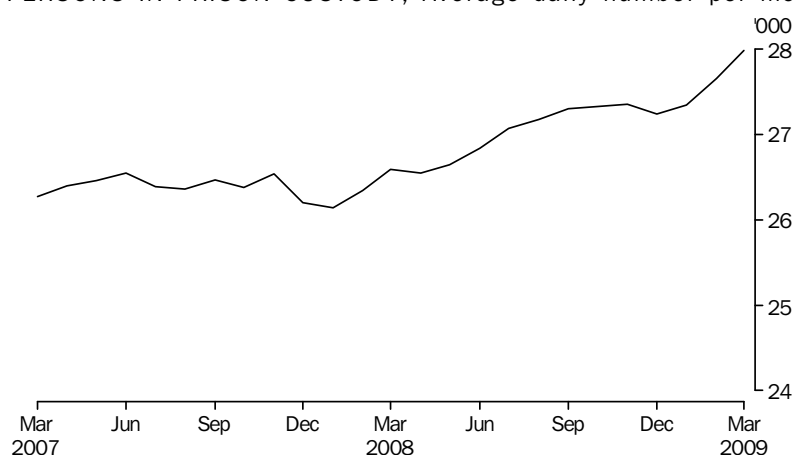
### PERSONS IN CORRECTIVE SERVICES

Based on first day of the month averages, for the March quarter 2009, there were 83,478 persons under the authority of corrective services (excluding those in periodic detention). The total comprised 27,472 persons in full-time custody and 56,006 persons in community-based corrections. This represents an increase of 4% (3,025 persons) from the March quarter 2008. Over the same period, persons in full-time custody increased by 5% (1,204 persons) and persons in community-based corrections increased by 3% (1,821 persons).

#### *Number of prisoners*

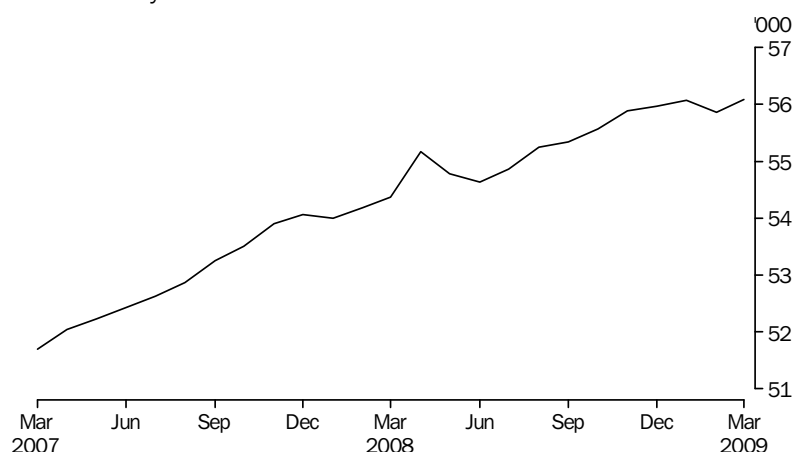
During the March quarter 2009, the average daily number of full-time prisoners in Australia was 27,643 persons. This was an increase of 1% from the December quarter 2008, and of 5% on the March quarter 2008.

#### PERSONS IN PRISON CUSTODY, Average daily number per month



Community-based corrections orders are non-custodial orders served under the authority of adult corrective services agencies and include restricted movement, reparations (fine options and community service) and supervision orders (parole, bail, and sentenced probation). Quarterly averages are based on first day of the month figures. In the March quarter 2009, there were 56,006 persons in community-based corrections in Australia based on first day of the month averages, an increase of less than 1% (200 persons) from the December quarter 2008.

#### PERSONS IN COMMUNITY-BASED CORRECTIONS, Average number on the first day of the month



## SUMMARY OF FINDINGS *continued*

### PERSONS IN CUSTODY

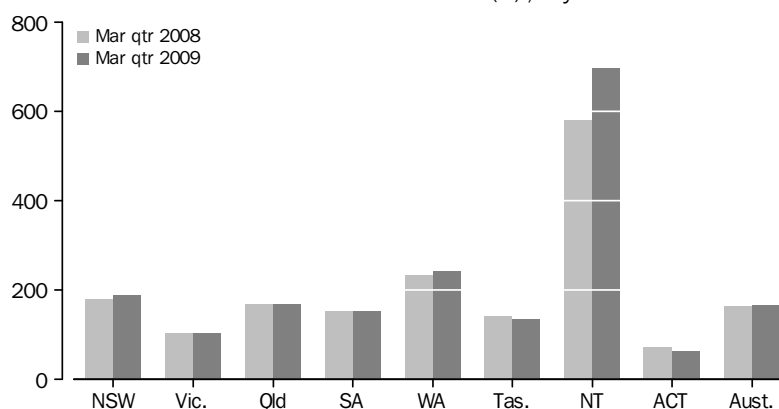
*Rates per 100,000 adults*

Nationally, the March quarter 2009 average daily imprisonment rate was 167 prisoners per 100,000 adult population, an increase of 2% from the March quarter 2008 (163 prisoners). The Northern Territory had the highest imprisonment rate (697 prisoners per 100,000 adult population), followed by Western Australia (241) and New South Wales (187).

The Australian Capital Territory (including Australian Capital Territory prisoners held in New South Wales prisons) and Victoria had the lowest imprisonment rates (64 and 102 prisoners per 100,000 adult population respectively).

The Northern Territory recorded the largest proportional increase in imprisonment rates from the March quarter 2008 (20%). The largest proportional decrease over the same period was recorded in the Australian Capital Territory (11%).

### AVERAGE DAILY IMPRISONMENT RATE(a), By states and territories



(a) Rate per 100,000 adult population.

### Sex

Of the average daily number of full-time prisoners in Australia in the March quarter 2009, 25,672 (93%) were male and 1,971 (7%) were female. The average daily imprisonment rate for males was 314 prisoners per 100,000 adult male population, while for females it was 23 prisoners per 100,000 adult female population. Males were 14 times more likely to be in prison than females.

### Type of full-time custody

The average daily number of prisoners in secure prison custody in the March quarter 2009 was 21,424 (78% of prisoners in full-time custody). Open prison custody comprised 6,220 prisoners.

In the March quarter 2009, all prisoners held in full-time custody in the Australian Capital Territory were in secure custody. Of all the other states and territories, Queensland had the highest proportion of prisoners in secure custody (91%), followed by Victoria (90%). New South Wales (including Australian Capital Territory prisoners held in New South Wales prisons) had the lowest proportion of prisoners in secure full-time custody (65%).

### Legal status

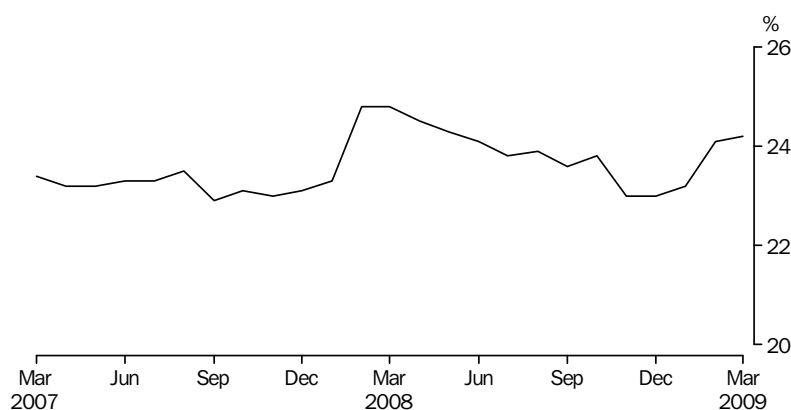
The average number of prisoners in full-time custody on the first day of each month in the March quarter 2009 was 27,472, comprising an average of 20,929 (76%) sentenced and 6,543 (24%) unsentenced prisoners. Sentenced prisoners decreased by less than 1% from the previous quarter but increased by 5% from the March quarter 2008.

## SUMMARY OF FINDINGS *continued*

### *Legal status continued*

Unsentenced prisoners increased by 3% from the previous quarter and increased by 2% from the March quarter 2008. The Australian Capital Territory (including Australian Capital Territory prisoners held in New South Wales prisons) and South Australia had the highest proportions of unsentenced prisoners (70% and 34% respectively). The lowest proportions of unsentenced prisoners were recorded in Western Australia (17%) and Victoria (19%).

### UNSENTENCED PERSONS IN PRISON CUSTODY (a), Proportion per month



(a) Based on average number on the first day of the month

### *Sentenced Prisoner Receptions*

There were 7,255 sentenced prisoner receptions into full-time custody in Australia in the March quarter 2009. This number decreased by 344 (5%) from the December quarter 2008, but has increased by 370 (5%) from the March quarter 2008.

### *Periodic detention*

Periodic detention is a form of custody or order where a sentenced prisoner is required to be held in custody on a part-time basis. This type of custody order is only used in New South Wales and the Australian Capital Territory. During the March quarter 2009 there was an average daily number of 728 persons in New South Wales and 51 persons in the Australian Capital Territory held in periodic detention. The rate of imprisonment for periodic detainees decreased by 4% in New South Wales, and by 14% in the Australian Capital Territory from the December quarter 2008.

### *Federal prisoners*

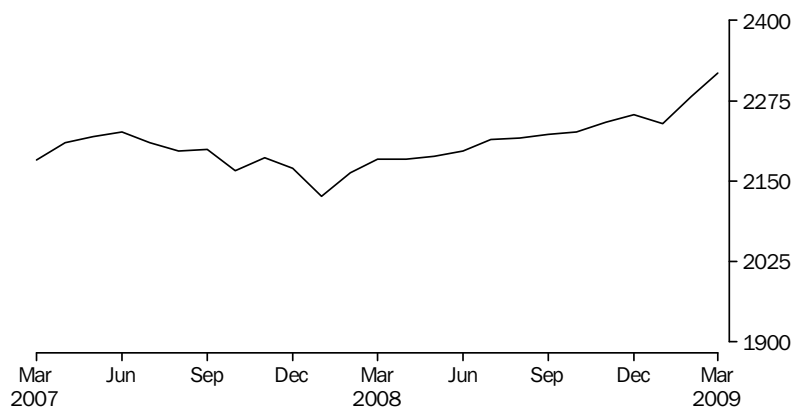
In the March quarter 2009, there were 701 federal prisoners in Australia based on first day of the month figures, an increase of 5% from the March quarter 2008. More than half (416) of the federal prisoners were sentenced in New South Wales.

## SUMMARY OF FINDINGS *continued*

### Indigenous prisoners

The average daily number of full-time Indigenous adult prisoners in Australia in the March quarter 2009 was 7,064, comprising 6,476 (92%) males and 588 (8%) females. Over 75% of the total Indigenous prisoner population was located in New South Wales (2,191), Western Australia (1,678) and Queensland (1,499).

### AVERAGE DAILY INDIGENOUS IMPRISONMENT RATE(a), Per month

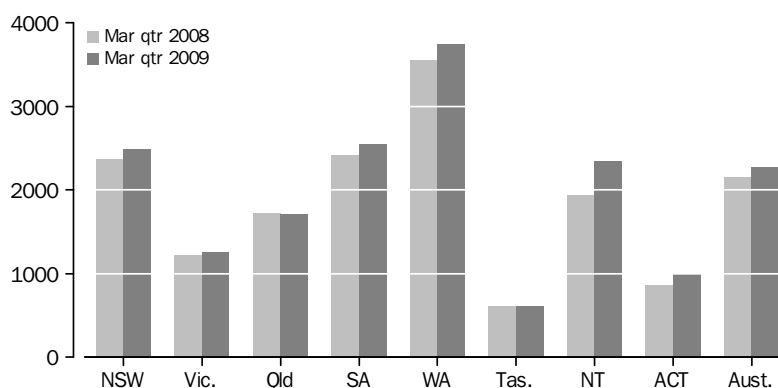


(a) Rate per 100,000 adult Indigenous population.

The national average daily Indigenous imprisonment rate in the March quarter 2009 was 2,279 per 100,000 adult Indigenous population, an increase of 2% from the previous quarter, and a 6% increase from the March quarter 2008.

The highest Indigenous imprisonment rate was recorded in Western Australia (3,741 Indigenous prisoners per 100,000 adult Indigenous population), followed by South Australia (2,543) and New South Wales (2,491). The lowest Indigenous imprisonment rate was recorded in Tasmania (608), followed by the Australian Capital Territory (996).

### AVERAGE DAILY INDIGENOUS IMPRISONMENT RATE(a), By states and territories



(a) Rate per 100,000 adult Indigenous population.

The largest proportional increase in the Indigenous imprisonment rate from the March quarter 2008 was recorded in the Northern Territory (21%), followed by the Australian Capital Territory (15%) (including Australian Capital Territory prisoners in New South Wales prisons). Queensland was the only state to record a proportional decrease (less than 1%) over the same period.

## SUMMARY OF FINDINGS *continued*

### *Indigenous prisoners* *continued*

Different age profiles of the Indigenous and non-Indigenous population can affect the imprisonment rate numbers. The quarterly collection is unable to take age into account; however, data from the Prisoner Census collection can provide this level of detail.

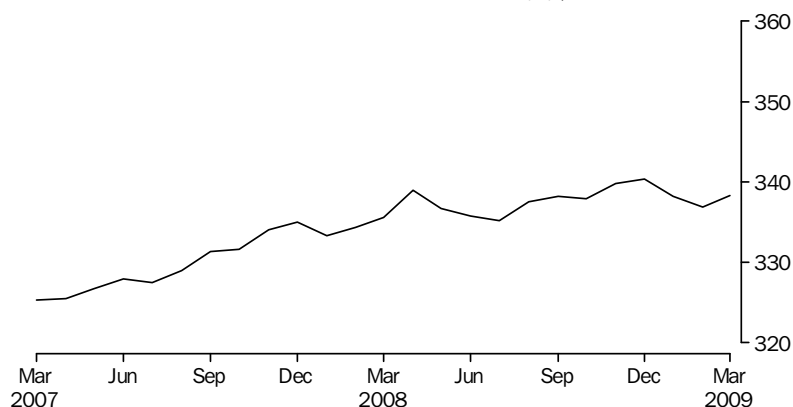
The national age standardised Indigenous imprisonment rate from the annual Prisoner Census conducted at June 2008 was over 13 times higher (1,769 per 100,000 adult Indigenous population) than the rate for non-Indigenous persons (133 per 100,000 adult non-Indigenous population). Further information on the comparison of imprisonment rates between Indigenous and non-Indigenous populations can be found in *Prisoners in Australia 2008* (cat.no.4517.0).

### PERSONS IN COMMUNITY-BASED CORRECTIONS

*Rates per 100,000 adults*

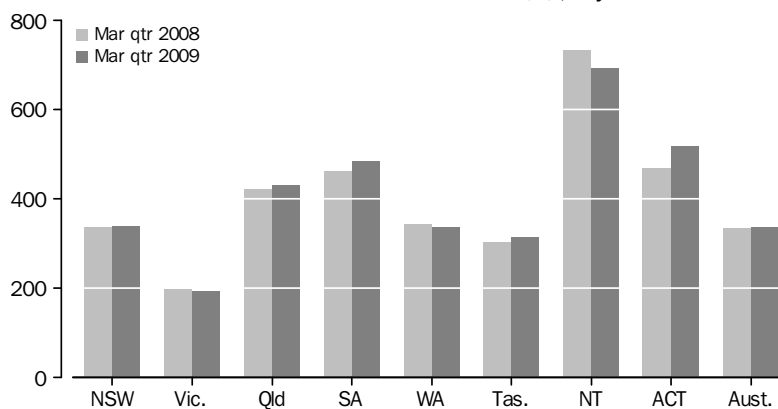
Nationally, the rate of persons in community-based corrections was 338 persons per 100,000 adult population for the March quarter 2009 based on first day of the month figures. This was an increase of 1% from the March quarter 2008 (334 persons per 100,000 adults). The largest increase from the March quarter 2008 was recorded in the Australian Capital Territory (11%). The largest decrease was recorded in the Northern Territory (6%).

#### COMMUNITY-BASED CORRECTIONS RATE(a), Per month



(a) Rate per 100,000 adult population, based on average number on the first day of the month

#### COMMUNITY-BASED CORRECTIONS RATE(a), By states and territories



(a) Rate per 100,000 adult population, based on average number on the first day of the month

### Sex

Of the average number of persons in community-based corrections in Australia in the March quarter 2009, 45,856 (82%) were male and 10,066 (18%) were female.

## SUMMARY OF FINDINGS *continued*

### *Sex continued*

In the March quarter 2009, the rate of community-based corrections for males was 561 per 100,000 adult male population compared to 120 females per 100,000 adult female population. Males were almost five times more likely to be in community-based corrections than females.

### *Type of orders*

In the March quarter 2009, there were 12,694 persons on parole following a period of imprisonment, an increase of 1% from the December quarter 2008. Three states accounted for 79% of persons serving parole orders: New South Wales (4,339 persons), Queensland (4,151) and Victoria (1,508). The largest proportional increase in parole orders from the December quarter 2008 was recorded in Tasmania and Western Australia (6%), followed by South Australia (4%).

For this same period, there were 34,197 persons under sentenced probation and 9,870 persons serving community service orders.



## PERSONS IN CORRECTIVE SERVICES, Summary(a)

	NSW(b)	Vic.	Qld	SA	WA	Tas.	NT	ACT in ACT(c)	ACT in NSW(b)	ACT Total(d)	Aust. (b)
AVERAGE DAILY NUMBER											
<b>Males in full-time custody</b>											
Mar Qtr 08	8 918	3 890	5 055	1 750	3 463	496	856	79	93	172	24 506
Dec Qtr 08	9 163	4 093	5 137	1 790	3 640	490	945	97	64	161	25 355
Mar Qtr 09	9 372	3 964	5 191	1 797	3 700	480	1 059	110	48	158	25 672
<b>Females in full-time custody</b>											
Mar Qtr 08	698	236	411	133	290	34	41	11	8	19	1 853
Dec Qtr 08	746	247	443	120	305	35	47	8	5	13	1 953
Mar Qtr 09	759	259	424	131	310	31	46	11	3	14	1 971
<b>Persons in full-time custody</b>											
Mar Qtr 08	9 616	4 126	5 466	1 882	3 753	530	896	90	101	191	26 359
Dec Qtr 08	9 909	4 340	5 580	1 911	3 945	525	993	106	68	174	27 308
Mar Qtr 09	10 131	4 223	5 615	1 928	4 010	511	1 105	121	52	173	27 643
<b>Indigenous persons in full-time custody</b>											
Mar Qtr 08	2 028	235	1 466	412	1 551	66	737	13	10	23	6 507
Dec Qtr 08	2 080	248	1 456	413	1 663	67	815	17	10	27	6 758
Mar Qtr 09	2 191	250	1 499	448	1 678	67	911	20	7	27	7 064
AVERAGE NUMBER ON FIRST DAY OF MONTH											
<b>Unsentenced persons in full-time custody</b>											
Mar Qtr 08	2 554	794	1 260	649	723	114	210	82	—	82	6 386
Dec Qtr 08	2 532	869	1 151	640	739	104	228	107	—	107	6 370
Mar Qtr 09	2 727	813	1 162	654	688	107	279	112	—	112	6 543
<b>Sentenced persons in full-time custody</b>											
Mar Qtr 08	7 050	3 316	4 159	1 235	3 026	405	691	1	101	102	19 882
Dec Qtr 08	7 399	3 490	4 440	1 288	3 210	424	745	—	66	66	20 996
Mar Qtr 09	7 366	3 401	4 381	1 271	3 292	401	818	—	47	47	20 929
<b>Persons in full-time custody</b>											
Mar Qtr 08	9 604	4 110	5 419	1 884	3 749	518	900	84	101	185	26 268
Dec Qtr 08	9 931	4 359	5 591	1 927	3 949	527	973	107	66	173	27 365
Mar Qtr 09	10 092	4 214	5 543	1 925	3 980	508	1 097	112	47	160	27 472
<b>Males in community-based corrections(e)</b>											
Mar Qtr 08	14 961	6 446	10 864	4 632	4 318	912	1 000	1 056	..	1 056	44 189
Dec Qtr 08	15 178	6 612	11 566	4 904	4 355	916	927	1 123	..	1 123	45 579
Mar Qtr 09	15 452	6 539	11 430	4 961	4 405	951	955	1 162	..	1 162	45 856
<b>Females in community-based corrections(e)</b>											
Mar Qtr 08	2 761	1 518	2 781	1 110	1 200	232	136	178	..	178	9 917
Dec Qtr 08	2 797	1 532	2 877	1 140	1 192	241	141	221	..	221	10 142
Mar Qtr 09	2 755	1 466	2 898	1 129	1 203	243	145	228	..	228	10 066
<b>Persons in community-based corrections(e)(f)</b>											
Mar Qtr 08	17 777	7 989	13 645	5 742	5 518	1 144	1 136	1 234	..	1 234	54 185
Dec Qtr 08	18 052	8 150	14 443	6 045	5 547	1 158	1 068	1 344	..	1 344	55 806
Mar Qtr 09	18 280	8 012	14 328	6 093	5 608	1 195	1 100	1 390	..	1 390	56 006

.. not applicable

— nil or rounded to zero (including null cells)

(a) For the calculation of quarterly figures – see Explanatory Notes, paragraph 5.

(b) Custodial data includes ACT prisoners held in NSW prisons. The ACT in NSW figures are a subset of the NSW figures and are not separately counted in the Australian totals – see Explanatory Notes, paragraph 17.

(c) Refers to unsentenced persons in ACT prison custody and may include some sentenced prisoners – see Explanatory Notes, paragraph 17.

(d) ACT in ACT figures and ACT in NSW figures may not add to ACT total due to rounding.

(e) Figures include persons with breached or suspended orders, with the exception of Vic. and Tas.

(f) Includes persons whose sex is unknown.

PERSONS IN CORRECTIVE SERVICES, Summary(a) *continued*

	NSW(b)	Vic.	Qld	SA	WA	Tas.	NT	ACT in ACT(c)	ACT in NSW(b)	ACT Total(d)	Aust. (b)
PERCENTAGE CHANGE (AVERAGE DAILY NUMBER)											
<b>Males in full-time custody</b>											
Mar Qtr 08 to Mar Qtr 09	5.1	1.9	2.7	2.7	6.8	-3.2	23.7	39.2	-48.4	-8.1	4.8
Dec Qtr 08 to Mar Qtr 09	2.3	-3.2	1.1	0.4	1.6	-2.0	12.1	13.4	-25.0	-1.9	1.3
<b>Females in full-time custody</b>											
Mar Qtr 08 to Mar Qtr 09	8.7	9.7	3.2	-1.5	6.9	-8.8	12.2	—	-62.5	-26.3	6.3
Dec Qtr 08 to Mar Qtr 09	1.7	4.9	-4.3	9.2	1.6	-11.4	-2.1	37.5	-40.0	7.7	0.9
<b>Persons in full-time custody</b>											
Mar Qtr 08 to Mar Qtr 09	5.4	2.4	2.7	2.4	6.8	-3.6	23.3	34.4	-48.5	-9.4	4.9
Dec Qtr 08 to Mar Qtr 09	2.2	-2.7	0.6	0.9	1.6	-2.7	11.3	14.2	-23.5	-0.6	1.2
<b>Indigenous persons in full-time custody</b>											
Mar Qtr 08 to Mar Qtr 09	8.0	6.4	2.3	8.7	8.2	1.5	23.6	53.8	-30.0	17.4	8.6
Dec Qtr 08 to Mar Qtr 09	5.3	0.8	3.0	8.5	0.9	—	11.8	17.6	-30.0	—	4.5
PERCENTAGE CHANGE (AVERAGE NUMBER ON FIRST DAY OF MONTH)											
<b>Unsentenced persons in full-time custody</b>											
Mar Qtr 08 to Mar Qtr 09	6.8	2.4	-7.8	0.8	-4.8	-6.1	32.9	36.6	—	36.6	2.4
Dec Qtr 08 to Mar Qtr 09	7.7	-6.4	1.0	2.2	-6.9	2.9	22.4	4.7	—	4.7	2.7
<b>Sentenced persons in full-time custody</b>											
Mar Qtr 08 to Mar Qtr 09	4.5	2.6	5.3	2.9	8.8	-1.0	18.4	-100.0	-53.5	-53.9	5.3
Dec Qtr 08 to Mar Qtr 09	-0.4	-2.6	-1.3	-1.3	2.5	-5.4	9.8	—	-28.8	-28.8	-0.3
<b>Persons in full-time custody</b>											
Mar Qtr 08 to Mar Qtr 09	5.1	2.5	2.3	2.2	6.2	-1.9	21.9	33.3	-53.5	-13.5	4.6
Dec Qtr 08 to Mar Qtr 09	1.6	-3.3	-0.9	-0.1	0.8	-3.6	12.7	4.7	-28.8	-7.5	0.4
<b>Males in community-based corrections(e)</b>											
Mar Qtr 08 to Mar Qtr 09	3.3	1.4	5.2	7.1	2.0	4.3	-4.5	10.0	. .	10.0	3.8
Dec Qtr 08 to Mar Qtr 09	1.8	-1.1	-1.2	1.2	1.1	3.8	3.0	3.5	. .	3.5	0.6
<b>Females in community-based corrections(e)</b>											
Mar Qtr 08 to Mar Qtr 09	-0.2	-3.4	4.2	1.7	0.3	4.7	6.6	28.1	. .	28.1	1.5
Dec Qtr 08 to Mar Qtr 09	-1.5	-4.3	0.7	-1.0	0.9	0.8	2.8	3.2	. .	3.2	-0.7
<b>Persons in community-based corrections(e)(f)</b>											
Mar Qtr 08 to Mar Qtr 09	2.8	0.3	5.0	6.1	1.6	4.5	-3.2	12.6	. .	12.6	3.4
Dec Qtr 08 to Mar Qtr 09	1.3	-1.7	-0.8	0.8	1.1	3.2	3.0	3.4	. .	3.4	0.4

. . not applicable

— nil or rounded to zero (including null cells)

(a) For the calculation of quarterly figures – see Explanatory Notes, paragraph 5.

(b) Custodial data includes ACT prisoners held in NSW prisons. The ACT in NSW figures are a subset of the NSW figures and are not separately counted in the Australian totals – see Explanatory Notes, paragraph 17.

(c) Refers to unsentenced persons in ACT prison custody and may include some sentenced prisoners – see Explanatory Notes, paragraph 17.

(d) ACT in ACT figures and ACT in NSW figures may not add to ACT total due to rounding.

(e) Figures include persons with breached or suspended orders, with the exception of Vic. and Tas.

(f) Includes persons whose sex is unknown.

## PERSONS IN FULL-TIME CUSTODY

	NSW(a)	Vic.	Qld(b)	SA	WA	Tas.	NT	ACT in ACT(c)	ACT in NSW(a)	ACT Total(d)	Aust. (a) (b)
AVERAGE DAILY NUMBER											
<b>2006</b>	9 281	3 825	5 569	1 590	3 517	518	803	66	115	181	25 169
<b>2007</b>	9 576	4 144	5 571	1 776	3 774	537	856	71	101	172	26 305
<b>2008</b>	9 804	4 240	5 549	1 908	3 824	526	939	95	84	179	26 885
<b>2008</b>											
Mar Qtr	9 616	4 126	5 466	1 882	3 753	530	896	90	101	191	26 359
Jun Qtr	9 777	4 185	5 547	1 902	3 733	527	919	88	94	181	26 677
Sep Qtr	9 910	4 308	5 599	1 936	3 862	522	947	97	73	170	27 180
Dec Qtr	9 909	4 340	5 580	1 911	3 945	525	993	106	68	174	27 308
<b>2009</b>											
Mar Qtr	10 131	4 223	5 615	1 928	4 010	511	1 105	121	52	173	27 643
<b>2008</b>											
Jan	9 561	4 126	5 373	1 834	3 745	528	894	77	98	175	26 138
Feb	9 601	4 108	5 473	1 904	3 730	531	906	94	106	199	26 346
Mar	9 683	4 142	5 553	1 911	3 782	533	889	100	99	198	26 592
Apr	9 692	4 175	5 547	1 891	3 723	532	905	85	99	185	26 550
May	9 770	4 188	5 532	1 895	3 726	528	920	86	93	179	26 645
Jun	9 869	4 192	5 564	1 919	3 749	523	931	92	89	181	26 838
Jul	9 916	4 272	5 569	1 944	3 816	517	934	98	82	180	27 067
Aug	9 919	4 319	5 588	1 942	3 852	516	948	95	72	167	27 179
Sep	9 895	4 333	5 643	1 920	3 918	534	960	97	66	163	27 299
Oct	9 907	4 360	5 613	1 913	3 936	543	950	106	65	171	27 328
Nov	9 925	4 366	5 578	1 916	3 954	521	985	112	70	182	27 357
Dec	9 896	4 295	5 548	1 903	3 946	512	1 042	99	70	169	27 242
<b>2009</b>											
Jan	10 004	4 190	5 546	1 907	3 938	501	1 093	110	62	172	27 289
Feb	10 153	4 210	5 617	1 920	4 017	511	1 107	126	50	177	27 661
Mar	10 239	4 268	5 681	1 956	4 075	521	1 116	126	44	169	27 982

- (a) Includes ACT prisoners held in NSW prisons. The ACT in NSW figures are a subset of the NSW figures and are not separately counted in the Australian totals – see Explanatory Notes, paragraph 17.
- (b) Data prior to the September quarter 2007 may be slightly overstated – see Explanatory Notes, paragraph 37.

- (c) Refers to unsentenced persons in ACT prison custody and may include some sentenced prisoners – see Explanatory Notes, paragraph 17.
- (d) ACT in ACT figures and ACT in NSW figures may not add to ACT total due to rounding.

## IMPRISONMENT RATES(a)

	NSW(b)	Vic.	Qld(c)	SA	WA	Tas.	NT	ACT(d)	Aust. (c)
RATE PER 100,000 ADULT POPULATION									
<b>2006</b>	175.6	98.0	180.1	132.0	227.5	139.7	552.3	72.0	160.0
<b>2007</b>	180.1	104.0	175.0	144.9	238.2	143.4	566.5	66.3	164.2
<b>2008</b>	182.6	104.4	169.9	153.5	234.9	138.9	601.6	67.5	164.7
<b>2008</b>									
Mar Qtr	179.8	102.3	169.0	152.2	233.1	140.7	579.6	72.4	162.7
Jun Qtr	182.3	103.4	170.5	153.3	230.3	139.4	590.4	68.7	163.9
Sep Qtr	184.4	105.8	170.9	155.4	236.2	137.6	606.0	64.0	166.1
Dec Qtr	183.8	106.1	169.2	153.0	239.6	138.1	629.2	65.2	166.1
<b>2009</b>									
Mar Qtr	186.9	102.3	168.6	153.8	240.6	134.3	696.8	64.2	166.7
<b>2008</b>									
Jan	178.8	102.3	166.1	148.3	232.6	140.0	578.4	66.5	161.3
Feb	179.4	101.8	169.2	154.0	231.7	140.8	586.1	75.7	162.6
Mar	181.1	102.7	171.7	154.5	234.9	141.3	575.0	75.3	164.1
Apr	180.6	103.1	170.5	152.5	229.7	140.6	581.6	70.0	163.2
May	182.2	103.5	170.0	152.8	229.9	139.5	591.2	67.7	163.7
Jun	184.1	103.6	171.0	154.7	231.3	138.2	598.4	68.5	164.9
Jul	184.3	104.9	170.0	156.1	233.4	136.2	597.5	67.7	165.4
Aug	184.6	106.1	170.5	155.9	235.6	135.9	606.7	63.0	166.1
Sep	184.2	106.4	172.2	154.1	239.6	140.7	614.1	61.4	166.8
Oct	183.2	106.2	169.7	153.0	238.1	143.0	603.1	63.9	165.7
Nov	183.5	106.3	168.6	153.3	239.2	137.3	624.9	68.0	165.9
Dec	183.0	104.6	167.7	152.2	238.7	134.9	661.6	63.1	165.2
<b>2009</b>									
Jan	184.3	101.5	166.6	152.1	236.3	131.6	689.2	64.0	164.6
Feb	187.3	102.0	168.7	153.1	241.0	134.3	697.5	65.8	166.8
Mar	189.0	103.4	170.6	156.0	244.5	136.9	703.7	63.1	168.8

(a) Imprisonment rates are based on different sources – see Explanatory Notes, paragraphs 20–24.

(b) Excludes ACT prisoners held in NSW prisons.

(c) Data prior to the September quarter 2007 may be slightly overstated – see Explanatory Notes, paragraph 37.

(d) Includes ACT prisoners held in ACT as well as ACT prisoners held in NSW – see Explanatory Notes, paragraph 19.

## PERSONS IN FULL-TIME CUSTODY, By sex

	NSW(a)	Vic.	Qld(b)	SA	WA	Tas.	NT	ACT in ACT(c)	ACT in NSW(a)	ACT Total(d)	Aust. (a) (b)
MALES (AVERAGE DAILY NUMBER)											
<b>2006</b>	8 601	3 588	5 168	1 488	3 257	478	771	60	108	169	23 412
<b>2007</b>	8 867	3 894	5 151	1 658	3 459	502	817	65	96	162	24 415
<b>2008</b>	9 078	3 997	5 122	1 782	3 538	489	895	86	77	163	24 986
<b>2008</b>											
Mar Qtr	8 918	3 890	5 055	1 750	3 463	496	856	79	93	172	24 506
Jun Qtr	9 025	3 946	5 138	1 778	3 471	488	877	80	85	165	24 803
Sep Qtr	9 201	4 057	5 155	1 809	3 575	482	899	88	68	157	25 267
Dec Qtr	9 163	4 093	5 137	1 790	3 640	490	945	97	64	161	25 355
<b>2009</b>											
Mar Qtr	9 372	3 964	5 191	1 797	3 700	480	1 059	110	48	158	25 672
Jan	9 262	3 940	5 134	1 777	3 640	470	1 049	100	58	157	25 371
Feb	9 394	3 951	5 196	1 788	3 709	481	1 061	115	47	162	25 695
Mar	9 464	3 999	5 242	1 826	3 752	489	1 067	114	41	155	25 953
FEMALES (AVERAGE DAILY NUMBER)											
<b>2006</b>	679	237	401	102	260	40	32	6	7	12	1 757
<b>2007</b>	709	249	419	118	315	35	39	6	5	11	1 890
<b>2008</b>	726	243	427	126	286	37	44	9	6	15	1 899
<b>2008</b>											
Mar Qtr	698	236	411	133	290	34	41	11	8	19	1 853
Jun Qtr	752	239	409	124	262	40	41	8	8	16	1 875
Sep Qtr	709	251	444	126	287	40	48	8	5	13	1 913
Dec Qtr	746	247	443	120	305	35	47	8	5	13	1 953
<b>2009</b>											
Mar Qtr	759	259	424	131	310	31	46	11	3	14	1 971
Jan	743	250	412	130	298	31	44	10	4	14	1 918
Feb	759	259	421	132	308	31	45	11	4	15	1 966
Mar	775	268	439	130	323	32	50	12	2	14	2 029
PERSONS (AVERAGE DAILY NUMBER)											
<b>2006</b>	9 281	3 825	5 569	1 590	3 517	518	803	66	115	181	25 169
<b>2007</b>	9 576	4 144	5 571	1 776	3 774	537	856	71	101	172	26 305
<b>2008</b>	9 804	4 240	5 549	1 908	3 824	526	939	95	84	179	26 885
<b>2008</b>											
Mar Qtr	9 616	4 126	5 466	1 882	3 753	530	896	90	101	191	26 359
Jun Qtr	9 777	4 185	5 547	1 902	3 733	527	919	88	94	181	26 677
Sep Qtr	9 910	4 308	5 599	1 936	3 862	522	947	97	73	170	27 180
Dec Qtr	9 909	4 340	5 580	1 911	3 945	525	993	106	68	174	27 308
<b>2009</b>											
Mar Qtr	10 131	4 223	5 615	1 928	4 010	511	1 105	121	52	173	27 643
Jan	10 004	4 190	5 546	1 907	3 938	501	1 093	110	62	172	27 289
Feb	10 153	4 210	5 617	1 920	4 017	511	1 107	126	50	177	27 661
Mar	10 239	4 268	5 681	1 956	4 075	521	1 116	126	44	169	27 982

(a) Includes ACT prisoners held in NSW prisons. The ACT in NSW figures are a subset of the NSW figures and are not separately counted in the Australian totals – see Explanatory Notes, paragraph 17.

(b) Data prior to the September quarter 2007 may be slightly overstated – see Explanatory Notes, paragraph 37.

(c) Refers to unsentenced persons in ACT prison custody and may include some sentenced prisoners – see Explanatory Notes, paragraph 17.

(d) ACT in ACT figures and ACT in NSW figures may not add to ACT total due to rounding.

## IMPRISONMENT RATES(a), By sex

	NSW(b)	Vic.	Qld(c)	SA	WA	Tas.	NT	ACT(d)	Aust. (c)
MALES (RATE PER 100,000 ADULT POPULATION)									
<b>2006</b>	330.4	188.3	336.7	251.7	422.8	264.9	996.7	136.5	301.9
<b>2007</b>	339.7	199.7	326.5	276.4	435.7	275.6	1 031.6	126.7	309.4
<b>2008</b>	345.0	201.0	316.6	293.2	432.4	265.3	1 097.6	125.5	310.9
<b>2008</b>									
Mar Qtr	340.0	196.9	315.5	289.3	428.1	270.4	1 060.2	132.5	307.1
Jun Qtr	343.5	199.2	318.8	293.3	426.4	265.0	1 080.3	127.2	309.6
Sep Qtr	349.3	203.5	317.6	297.1	435.0	261.1	1 101.4	120.1	313.5
Dec Qtr	346.8	204.3	314.3	293.0	439.5	264.6	1 146.4	122.4	313.0
<b>2009</b>									
Mar Qtr	352.6	195.9	314.5	293.3	440.6	259.0	1 284.6	119.6	314.2
Jan	348.1	194.7	311.0	289.9	433.4	253.8	1 272.6	119.1	310.5
Feb	353.5	195.2	314.8	291.7	441.6	259.4	1 287.6	122.4	314.5
Mar	356.3	197.6	317.6	297.9	446.8	263.9	1 294.0	117.4	317.6
FEMALES (RATE PER 100,000 ADULT POPULATION)									
<b>2006</b>	25.4	11.8	25.8	16.7	33.6	20.8	46.9	9.7	22.0
<b>2007</b>	26.3	12.3	26.1	18.9	39.8	18.2	53.6	8.0	23.2
<b>2008</b>	26.5	11.7	25.9	19.8	35.3	19.1	59.5	11.4	22.9
<b>2008</b>									
Mar Qtr	25.6	11.4	25.2	21.0	36.2	17.8	54.9	14.2	22.5
Jun Qtr	27.4	11.6	24.9	19.5	32.5	20.4	55.4	12.2	22.7
Sep Qtr	25.9	12.1	26.9	19.8	35.3	20.3	64.7	9.7	23.0
Dec Qtr	27.2	11.8	26.6	18.9	37.3	18.1	62.7	9.7	23.4
<b>2009</b>									
Mar Qtr	27.5	12.3	25.2	20.4	37.5	15.9	60.9	10.6	23.4
Jan	26.9	11.9	24.5	20.3	36.1	15.6	58.1	10.5	22.8
Feb	27.5	12.3	25.1	20.6	37.3	15.7	59.4	10.9	23.4
Mar	28.1	12.7	26.1	20.3	39.1	16.5	65.2	10.5	24.1
PERSONS (RATE PER 100,000 ADULT POPULATION)									
<b>2006</b>	175.6	98.0	180.1	132.0	227.5	139.7	552.3	72.0	160.0
<b>2007</b>	180.1	104.0	175.0	144.9	238.2	143.4	566.5	66.3	164.2
<b>2008</b>	182.6	104.4	169.9	153.5	234.9	138.9	601.6	67.5	164.7
<b>2008</b>									
Mar Qtr	179.8	102.3	169.0	152.2	233.1	140.7	579.6	72.4	162.7
Jun Qtr	182.3	103.4	170.5	153.3	230.3	139.4	590.4	68.7	163.9
Sep Qtr	184.4	105.8	170.9	155.4	236.2	137.6	606.0	64.0	166.1
Dec Qtr	183.8	106.1	169.2	153.0	239.6	138.1	629.2	65.2	166.1
<b>2009</b>									
Mar Qtr	186.9	102.3	168.6	153.8	240.6	134.3	696.8	64.2	166.7
Jan	184.3	101.5	166.6	152.1	236.3	131.6	689.2	64.0	164.6
Feb	187.3	102.0	168.7	153.1	241.0	134.3	697.5	65.8	166.8
Mar	189.0	103.4	170.6	156.0	244.5	136.9	703.7	63.1	168.8

(a) Imprisonment rates are based on different sources – see Explanatory Notes, paragraphs 20–24.

(b) Excludes ACT prisoners held in NSW prisons.

(c) Data prior to the September quarter 2007 may be slightly overstated – see Explanatory Notes, paragraph 37.

(d) Includes ACT prisoners held in ACT as well as ACT prisoners held in NSW – see Explanatory Notes, paragraph 19.

## PERSONS IN FULL-TIME CUSTODY, By type of custody

	NSW(a) (b)	Vic.	Qld(c)	SA	WA(d)	Tas.	NT	ACT in ACT(e)	ACT in NSW(a)	ACT Total(f)	Aust. (g)
PERSONS IN SECURE CUSTODY (AVERAGE DAILY NUMBER)											
<b>2006</b>	5 736	3 443	4 766	1 413	2 608	444	616	66	33	99	19 093
<b>2007</b>	5 893	3 743	4 853	1 581	2 771	477	621	71	26	97	20 010
<b>2008</b>	6 229	3 797	4 952	1 703	2 794	468	663	95	25	120	20 701
<b>2008</b>											
Mar Qtr	5 942	3 693	4 895	1 684	2 735	468	641	90	26	116	20 147
Jun Qtr	6 237	3 753	4 936	1 704	2 764	470	649	88	29	116	20 600
Sep Qtr	6 295	3 854	4 974	1 737	2 862	467	662	97	24	121	20 949
Dec Qtr	6 436	3 886	5 000	1 686	2 814	468	699	106	20	126	21 095
<b>2009</b>											
Mar Qtr	6 630	3 802	5 083	1 713	2 845	454	776	121	14	135	21 424
Jan	6 529	3 773	5 033	1 690	2 786	442	779	110	16	126	21 143
Feb	6 673	3 797	5 075	1 710	2 850	455	773	126	14	140	21 460
Mar	6 692	3 834	5 139	1 739	2 900	466	776	126	13	138	21 672
PERSONS IN OPEN CUSTODY (AVERAGE DAILY NUMBER)											
<b>2006</b>	3 545	381	803	177	909	74	187	..	82	82	6 076
<b>2007</b>	3 683	401	717	195	1 003	61	235	..	75	75	6 295
<b>2008</b>	3 575	443	597	205	1 030	58	276	..	59	59	6 184
<b>2008</b>											
Mar Qtr	3 674	432	571	199	1 018	63	255	..	75	75	6 212
Jun Qtr	3 540	432	612	198	969	57	270	..	65	65	6 078
Sep Qtr	3 615	454	625	199	999	55	285	..	49	49	6 232
Dec Qtr	3 473	454	580	224	1 131	57	293	..	48	48	6 213
<b>2009</b>											
Mar Qtr	3 501	421	532	215	1 164	57	329	..	38	38	6 220
Jan	3 475	417	512	217	1 152	59	315	..	46	46	6 147
Feb	3 479	413	542	210	1 167	56	333	..	37	37	6 201
Mar	3 547	433	542	217	1 175	55	341	..	31	31	6 310
PERSONS IN CUSTODY (AVERAGE DAILY NUMBER)											
<b>2006</b>	9 281	3 825	5 569	1 590	3 517	518	803	66	115	181	25 169
<b>2007</b>	9 576	4 144	5 571	1 776	3 774	537	856	71	101	172	26 305
<b>2008</b>	9 804	4 240	5 549	1 908	3 824	526	939	95	84	179	26 885
<b>2008</b>											
Mar Qtr	9 616	4 126	5 466	1 882	3 753	530	896	90	101	191	26 359
Jun Qtr	9 777	4 185	5 547	1 902	3 733	527	919	88	94	181	26 677
Sep Qtr	9 910	4 308	5 599	1 936	3 862	522	947	97	73	170	27 180
Dec Qtr	9 909	4 340	5 580	1 911	3 945	525	993	106	68	174	27 308
<b>2009</b>											
Mar Qtr	10 131	4 223	5 615	1 928	4 010	511	1 105	121	52	173	27 643
Jan	10 004	4 190	5 546	1 907	3 938	501	1 093	110	62	172	27 289
Feb	10 153	4 210	5 617	1 920	4 017	511	1 107	126	50	177	27 661
Mar	10 239	4 268	5 681	1 956	4 075	521	1 116	126	44	169	27 982

.. not applicable

(a) Includes ACT prisoners held in NSW prisons. The ACT in NSW figures are a subset of the NSW figures and are not separately counted in the Australian totals – see Explanatory Notes, paragraph 17.

(b) The classification of some NSW correctional facilities changed from March 2008 – see Explanatory Notes, paragraph 34.

(c) Data prior to the September quarter 2007 may be slightly overstated – see Explanatory Notes, paragraph 37.

(d) The definition of persons in secure and open custody differs to the standard definition – see Explanatory Notes, paragraph 40.

(e) Refers to unsentenced persons in ACT prison custody and may include some sentenced prisoners – see Explanatory Notes, paragraph 17.

(f) ACT in ACT figures and ACT in NSW figures may not add to ACT total due to rounding.

(g) See footnotes a-d.

## IMPRISONMENT RATES(a), By type of custody

	NSW(b)(c)	Vic.	Qld(d)	SA	WA(e)	Tas.	NT	ACT(f)	Aust.(g)
PERSONS IN SECURE CUSTODY (RATE PER 100,000 ADULT POPULATION)									
<b>2006</b>	109.3	88.2	154.1	117.3	168.7	119.9	423.8	39.5	121.4
<b>2007</b>	111.5	93.9	152.5	129.0	174.9	127.3	410.9	37.5	124.9
<b>2008</b>	116.5	93.5	151.6	137.0	171.6	123.7	424.8	45.2	126.8
<b>2008</b>									
Mar Qtr	111.8	91.6	151.3	136.1	169.9	124.1	414.5	44.0	124.3
Jun Qtr	116.9	92.7	151.7	137.4	170.5	124.4	417.1	44.2	126.6
Sep Qtr	117.5	94.6	151.8	139.4	175.1	123.1	423.9	45.5	128.0
Dec Qtr	119.8	95.0	151.6	135.0	170.9	123.2	443.2	47.1	128.3
<b>2009</b>									
Mar Qtr	122.7	92.1	152.7	136.6	170.7	119.3	489.1	50.2	129.2
Jan	120.7	91.4	151.2	134.8	167.2	116.1	490.8	47.0	127.5
Feb	123.5	92.0	152.4	136.4	171.0	119.5	487.4	52.2	129.4
Mar	123.8	92.9	154.4	138.7	174.0	122.3	488.9	51.6	130.7
PERSONS IN OPEN CUSTODY (RATE PER 100,000 ADULT POPULATION)									
<b>2006</b>	66.3	9.8	26.0	14.7	58.8	19.9	128.5	32.5	38.6
<b>2007</b>	68.6	10.1	22.5	15.9	63.3	16.2	155.6	28.8	39.3
<b>2008</b>	66.0	10.9	18.3	16.5	63.2	15.3	176.8	22.4	37.9
<b>2008</b>									
Mar Qtr	68.0	10.7	17.6	16.1	63.2	16.6	165.1	28.4	38.3
Jun Qtr	65.4	10.7	18.8	16.0	59.8	15.0	173.4	24.6	37.4
Sep Qtr	66.8	11.1	19.1	16.0	61.1	14.5	182.2	18.5	38.1
Dec Qtr	64.0	11.1	17.6	18.0	68.7	14.9	186.0	18.1	37.8
<b>2009</b>									
Mar Qtr	64.2	10.2	16.0	17.1	69.9	15.0	207.7	14.1	37.5
Jan	63.6	10.1	15.4	17.3	69.1	15.5	198.4	17.0	37.1
Feb	63.8	10.0	16.3	16.7	70.0	14.8	210.2	13.7	37.4
Mar	65.2	10.5	16.3	17.3	70.5	14.6	214.8	11.5	38.1
PERSONS IN CUSTODY (RATE PER 100,000 ADULT POPULATION)									
<b>2006</b>	175.6	98.0	180.1	132.0	227.5	139.7	552.3	72.0	160.0
<b>2007</b>	180.1	104.0	175.0	144.9	238.2	143.4	566.5	66.3	164.2
<b>2008</b>	182.6	104.4	169.9	153.5	234.9	138.9	601.6	67.5	164.7
<b>2008</b>									
Mar Qtr	179.8	102.3	169.0	152.2	233.1	140.7	579.6	72.4	162.7
Jun Qtr	182.3	103.4	170.5	153.3	230.3	139.4	590.4	68.7	163.9
Sep Qtr	184.4	105.8	170.9	155.4	236.2	137.6	606.0	64.0	166.1
Dec Qtr	183.8	106.1	169.2	153.0	239.6	138.1	629.2	65.2	166.1
<b>2009</b>									
Mar Qtr	186.9	102.3	168.6	153.8	240.6	134.3	696.8	64.2	166.7
Jan	184.3	101.5	166.6	152.1	236.3	131.6	689.2	64.0	164.6
Feb	187.3	102.0	168.7	153.1	241.0	134.3	697.5	65.8	166.8
Mar	189.0	103.4	170.6	156.0	244.5	136.9	703.7	63.1	168.8

(a) Imprisonment rates are based on different sources – see Explanatory Notes, paragraphs 20–24.

(b) Excludes ACT prisoners held in NSW prisons.

(c) The classification of some NSW correctional facilities changed from March 2008 – see Explanatory Notes, paragraph 34.

(d) Data prior to the September quarter 2007 may be slightly overstated – see Explanatory Notes, paragraph 37.

(e) The definition of persons in secure and open custody differs to the standard definition - see Explanatory Notes, paragraph 40.

(f) Includes ACT prisoners held in ACT as well as ACT prisoners held in NSW – see Explanatory Notes, paragraph 19.

(g) See footnotes c-e.



## PERSONS IN FULL-TIME CUSTODY(a), By legal status

	NSW(b)	Vic.	Qld(c)	SA	WA	Tas.	NT	ACT in ACT(d)	ACT in NSW(b)	ACT Total(e)	Aust.(b)(c)
UNSENTENCED (NUMBER ON FIRST DAY OF MONTH)											
<b>2006</b>	2 221	700	1 176	548	603	120	164	65	—	65	5 597
<b>2007</b>	2 400	785	1 251	619	682	115	170	67	—	67	6 089
<b>2008</b>	2 545	836	1 223	650	752	112	213	92	—	92	6 423
<b>2008</b>											
Mar Qtr	2 554	794	1 260	649	723	114	210	82	—	82	6 386
Jun Qtr	2 571	855	1 255	645	756	117	198	86	—	86	6 482
Sep Qtr	2 523	827	1 227	668	791	113	214	92	—	92	6 456
Dec Qtr	2 532	869	1 151	640	739	104	228	107	—	107	6 370
<b>2009</b>											
Mar Qtr	2 727	813	1 162	654	688	107	279	112	—	112	6 543
SENTENCED (NUMBER ON FIRST DAY OF MONTH)											
<b>2006</b>	7 049	3 105	4 367	1 048	2 906	398	637	1	115	116	19 509
<b>2007</b>	7 170	3 351	4 312	1 161	3 073	419	687	1	101	101	20 174
<b>2008</b>	7 264	3 396	4 306	1 271	3 060	413	719	—	82	82	20 429
<b>2008</b>											
Mar Qtr	7 050	3 316	4 159	1 235	3 026	405	691	1	101	102	19 882
Jun Qtr	7 188	3 321	4 290	1 265	2 965	418	710	—	92	92	20 158
Sep Qtr	7 417	3 458	4 336	1 294	3 037	407	730	—	69	70	20 679
Dec Qtr	7 399	3 490	4 440	1 288	3 210	424	745	—	66	66	20 996
<b>2009</b>											
Mar Qtr	7 366	3 401	4 381	1 271	3 292	401	818	—	47	47	20 929
TOTAL (NUMBER ON FIRST DAY OF MONTH)											
<b>2006</b>	9 269	3 805	5 543	1 595	3 509	518	801	65	115	180	25 106
<b>2007</b>	9 570	4 137	5 563	1 781	3 755	534	857	68	101	168	26 264
<b>2008</b>	9 809	4 233	5 529	1 921	3 812	525	931	92	82	174	26 852
<b>2008</b>											
Mar Qtr	9 604	4 110	5 419	1 884	3 749	518	900	84	101	185	26 268
Jun Qtr	9 759	4 176	5 545	1 910	3 721	535	907	86	92	178	26 640
Sep Qtr	9 940	4 286	5 563	1 962	3 828	519	944	92	69	162	27 135
Dec Qtr	9 931	4 359	5 591	1 927	3 949	527	973	107	66	173	27 365
<b>2009</b>											
Mar Qtr	10 092	4 214	5 543	1 925	3 980	508	1 097	112	47	160	27 472
Jan	9 986	4 247	5 498	1 924	3 925	496	1 063	93	56	149	27 232
Feb	10 108	4 160	5 540	1 903	3 976	499	1 113	119	48	167	27 418
Mar	10 183	4 236	5 591	1 948	4 037	529	1 115	125	38	163	27 764

— nil or rounded to zero (including null cells)

- (a) Figures for the quarter and year for first day of month counts are calculated as a simple average – see Explanatory Notes, paragraph 5.
- (b) Includes ACT prisoners held in NSW prisons. The ACT in NSW figures are a subset of the NSW figures and are not separately counted in the Australian totals – see Explanatory Notes, paragraph 17.

(c) Data prior to the September quarter 2007 may be slightly overstated – see Explanatory Notes, paragraph 37.

(d) Refers to unsentenced persons in ACT prison custody and may include some sentenced prisoners – see Explanatory Notes, paragraph 17.

(e) ACT in ACT figures and ACT in NSW figures may not add to ACT total due to rounding.

## IMPRISONMENT RATES(a), By legal status

	NSW(b)	Vic.	Qld(c)	SA	WA	Tas.	NT	ACT(d)	Aust.(c)
UNSENTENCED (RATE PER 100,000 ADULT POPULATION)									
<b>2006</b>	42.5	17.9	38.0	45.5	39.0	32.4	112.8	25.7	35.6
<b>2007</b>	45.6	19.7	39.3	50.5	43.0	30.7	112.7	25.8	38.0
<b>2008</b>	47.8	20.6	37.5	52.3	46.2	29.5	136.2	34.7	39.4
<b>2008</b>									
Mar Qtr	48.2	19.7	38.9	52.5	44.9	30.2	135.6	31.3	39.4
Jun Qtr	48.4	21.1	38.6	52.0	46.6	30.9	127.0	32.6	39.8
Sep Qtr	47.3	20.3	37.5	53.6	48.4	29.7	137.1	34.7	39.4
Dec Qtr	47.3	21.2	34.9	51.2	44.9	27.3	144.7	40.2	38.7
<b>2009</b>									
Mar Qtr	50.5	19.7	34.9	52.2	41.3	28.0	176.1	41.8	39.5
SENTENCED (RATE PER 100,000 ADULT POPULATION)									
<b>2006</b>	132.8	79.5	141.2	87.0	188.0	107.5	438.0	45.9	124.0
<b>2007</b>	134.4	84.1	135.5	94.7	194.0	111.8	454.8	39.1	125.9
<b>2008</b>	134.9	83.6	131.9	102.2	187.9	109.1	460.6	31.1	125.2
<b>2008</b>									
Mar Qtr	131.3	82.2	128.6	99.8	188.0	107.4	446.8	38.8	122.7
Jun Qtr	133.6	82.1	131.8	102.0	183.0	110.5	456.1	34.9	123.9
Sep Qtr	137.7	84.9	132.3	103.9	185.7	107.2	467.1	26.3	126.4
Dec Qtr	137.0	85.3	134.6	103.1	195.0	111.4	472.3	24.6	127.7
<b>2009</b>									
Mar Qtr	135.7	82.4	131.6	101.4	197.5	105.4	515.4	17.6	126.2
TOTAL (RATE PER 100,000 ADULT POPULATION)									
<b>2006</b>	175.4	97.5	179.3	132.4	227.0	139.9	550.8	71.6	159.6
<b>2007</b>	180.0	103.8	174.8	145.3	237.0	142.5	567.4	64.9	163.9
<b>2008</b>	182.7	104.2	169.3	154.6	234.1	138.6	596.8	65.8	164.5
<b>2008</b>									
Mar Qtr	179.5	101.9	167.5	152.3	232.9	137.5	582.4	70.1	162.1
Jun Qtr	182.0	103.2	170.4	154.0	229.6	141.5	583.2	67.5	163.7
Sep Qtr	185.0	105.2	169.8	157.5	234.1	136.9	604.2	60.9	165.8
Dec Qtr	184.3	106.5	169.6	154.3	239.8	138.7	617.0	64.8	166.4
<b>2009</b>									
Mar Qtr	186.2	102.1	166.5	153.5	238.8	133.5	691.5	59.5	165.7
Jan	184.1	102.9	165.1	153.5	235.5	130.3	670.1	55.5	164.2
Feb	186.5	100.8	166.4	151.8	238.5	131.1	701.6	62.2	165.4
Mar	188.1	102.6	167.9	155.4	242.2	139.0	702.9	60.7	167.5

(a) Imprisonment rates are based on different sources – see Explanatory Notes, paragraphs 20–24.

(b) Excludes ACT prisoners held in NSW prisons.

(c) Data prior to the September quarter 2007 may be slightly overstated – see Explanatory Notes, paragraph 37.

(d) Includes ACT prisoners held in ACT as well as ACT prisoners held in NSW – see Explanatory Notes, paragraph 19.

## SENTENCED PRISONER RECEPTIONS INTO FULL-TIME CUSTODY(a)

	NSW(b)	Vic.	Qld	SA	WA	Tas.	NT	ACT in ACT	ACT in NSW(b)	ACT Total	Aust. (b)
NUMBER											
<b>2006</b>	8 056	3 863	6 045	1 210	3 331	836	1 350	53	128	181	24 744
<b>2007</b>	8 625	3 914	7 027	1 457	3 805	753	1 394	30	128	158	27 005
<b>2008</b>	9 098	3 915	8 223	1 507	4 355	360	1 442	19	112	131	29 306
<b>2008</b>											
Mar Qtr	2 143	841	2 008	378	957	172	374	12	40	52	6 885
Jun Qtr	2 391	1 046	2 084	406	967	170	369	6	25	31	7 439
Sep Qtr	2 226	1 025	2 078	368	1 126	215	344	np	np	16	7 383
Dec Qtr	2 338	1 003	2 053	355	1 305	190	355	np	np	32	7 599
<b>2009</b>											
Mar Qtr	2 091	855	2 053	367	1 301	156	431	np	np	3	7 255

np not available for publication but included in totals where applicable, unless otherwise indicated

(a) The count of sentenced prisoner receptions is an addition of the total number for each month within the reference period – see Explanatory Notes, paragraphs 2–5.

(b) Includes ACT prisoners held in NSW prisons. The ACT in NSW figures are a subset of the NSW figures and are not separately counted in the Australian totals – see Explanatory Notes, paragraph 17.

## PERSONS IN PERIODIC DETENTION(a)(b), By sex

	NSW		ACT	
	no.(c)	rate(d)	no.(c)	rate(d)
MALES				
<b>2006</b>	684	26.6	52	42.2
<b>2007</b>	685	26.5	54	42.7
<b>2008</b>	653	25.0	50	38.1
<b>2008</b>				
Mar Qtr	623	24.0	39	30.2
Jun Qtr	620	23.8	56	43.2
Sep Qtr	674	25.8	53	40.7
Dec Qtr	693	26.4	50	38.0
<b>2009</b>				
Mar Qtr	671	25.4	43	32.2
Jan	678	25.6	47	35.9
Feb	652	24.7	43	32.3
Mar	682	25.8	38	28.4
FEMALES				
<b>2006</b>	64	2.4	3	2.2
<b>2007</b>	74	2.8	5	4.1
<b>2008</b>	65	2.4	6	4.4
<b>2008</b>				
Mar Qtr	74	2.7	4	2.7
Jun Qtr	72	2.7	5	4.0
Sep Qtr	57	2.1	6	4.3
Dec Qtr	58	2.1	9	6.4
<b>2009</b>				
Mar Qtr	57	2.1	8	6.0
Jan	58	2.1	9	6.7
Feb	57	2.1	8	5.7
Mar	57	2.1	8	5.5
PERSONS				
<b>2006</b>	748	14.3	55	21.8
<b>2007</b>	759	14.4	60	23.0
<b>2008</b>	718	13.5	55	20.9
<b>2008</b>				
Mar Qtr	696	13.2	43	16.2
Jun Qtr	692	13.0	61	23.2
Sep Qtr	731	13.7	59	22.2
Dec Qtr	751	14.0	59	22.0
<b>2009</b>				
Mar Qtr	728	13.5	51	18.9
Jan	736	13.6	57	21.1
Feb	709	13.1	51	18.8
Mar	738	13.7	45	16.8

(a) Periodic detention is a form of custody only used in NSW and the ACT.

(b) Imprisonment rates are based on different sources – see Explanatory Notes, paragraphs 20–24.

(c) Average daily number.

(d) Rate per 100,000 adult population.

## FEDERAL SENTENCED PERSONS IN FULL-TIME CUSTODY(a)(b), By sex

	NSW	Vic.	Qld	SA	WA	Tas.	NT	ACT	Aust.
MALES (NUMBER ON FIRST DAY OF MONTH)									
<b>2006</b>	334	76	57	12	64	9	12	3	565
<b>2007</b>	338	76	66	14	52	5	16	5	572
<b>2008</b>	327	83	68	22	43	6	13	2	563
<b>2008</b>									
Mar Qtr	327	75	65	24	51	3	12	3	560
Jun Qtr	320	80	71	24	43	4	18	1	562
Sep Qtr	324	89	69	20	40	7	9	1	559
Dec Qtr	336	87	67	21	39	9	12	2	572
<b>2009</b>									
Mar Qtr	345	82	79	16	42	8	12	1	584
FEMALES (NUMBER ON FIRST DAY OF MONTH)									
<b>2006</b>	51	5	17	3	10	5	2	—	93
<b>2007</b>	58	5	16	2	7	3	—	—	93
<b>2008</b>	73	7	22	3	8	6	—	—	121
<b>2008</b>									
Mar Qtr	70	5	22	1	8	4	—	—	110
Jun Qtr	73	8	23	3	7	6	—	1	122
Sep Qtr	73	8	22	5	8	9	1	—	126
Dec Qtr	73	7	23	4	10	7	1	—	124
<b>2009</b>									
Mar Qtr	70	6	19	4	11	4	2	—	117
PERSONS (NUMBER ON FIRST DAY OF MONTH)									
<b>2006</b>	385	81	74	15	74	14	14	3	658
<b>2007</b>	396	81	82	16	59	9	16	5	664
<b>2008</b>	399	90	90	25	52	12	13	2	684
<b>2008</b>									
Mar Qtr	397	80	87	25	59	7	12	3	670
Jun Qtr	393	89	94	27	51	11	18	2	684
Sep Qtr	398	97	90	24	48	16	10	2	685
Dec Qtr	409	94	89	25	48	15	13	2	696
<b>2009</b>									
Mar Qtr	416	87	98	20	54	12	14	1	701
Jan	413	89	99	23	53	np	14	np	705
Feb	419	88	99	18	55	np	14	np	706
Mar	415	85	96	19	53	np	13	np	693

— nil or rounded to zero (including null cells)

np not available for publication but included in totals where applicable, unless otherwise indicated

(a) Counts reflect the state or territory in which a prisoner was sentenced, not where they were held in custody.

(b) Figures for the quarter and year for the first day of the month counts are calculated as a simple average – see Explanatory Notes, paragraph 5.

## INDIGENOUS PERSONS IN FULL-TIME CUSTODY(a), By sex

	NSW(b)	Vic.	Qld(c)	SA	WA	Tas.	NT	ACT in ACT(d)	ACT in NSW(b)	ACT Total(e)	Aust.(b)(c)
MALES (AVERAGE DAILY NUMBER)											
<b>2006</b>	1 716	202	1 379	281	1 274	53	637	8	9	17	5 548
<b>2007</b>	1 771	214	1 355	349	1 420	59	671	8	11	19	5 847
<b>2008</b>	1 852	229	1 364	383	1 444	59	736	12	8	20	6 080
<b>2008</b>											
Mar Qtr	1 817	219	1 352	381	1 398	57	704	10	9	19	5 938
Jun Qtr	1 836	226	1 402	391	1 394	58	723	11	8	19	6 042
Sep Qtr	1 882	237	1 361	375	1 463	61	741	12	7	19	6 133
Dec Qtr	1 874	231	1 341	386	1 520	60	776	14	9	24	6 202
<b>2009</b>											
Mar Qtr	1 970	231	1 378	412	1 532	61	875	18	6	24	6 476
Jan	1 929	231	1 355	409	1 520	58	864	17	8	25	6 383
Feb	1 976	229	1 377	407	1 539	60	880	18	5	23	6 487
Mar	2 005	234	1 403	420	1 537	64	879	18	5	23	6 561
FEMALES (AVERAGE DAILY NUMBER)											
<b>2006</b>	194	13	114	24	134	8	23	1	—	1	512
<b>2007</b>	209	15	115	29	175	7	32	1	—	1	584
<b>2008</b>	213	17	115	28	143	8	36	2	1	3	561
<b>2008</b>											
Mar Qtr	212	16	114	30	153	8	33	3	1	4	569
Jun Qtr	234	16	109	27	136	7	33	2	1	2	564
Sep Qtr	200	18	120	26	141	9	41	2	1	3	557
Dec Qtr	206	17	115	27	143	6	40	2	1	3	556
<b>2009</b>											
Mar Qtr	221	19	121	36	146	7	36	2	1	3	588
Jan	205	18	115	35	139	6	34	3	1	4	555
Feb	218	19	120	37	148	7	35	2	1	3	585
Mar	240	19	127	35	152	8	39	2	1	3	623
PERSONS (AVERAGE DAILY NUMBER)											
<b>2006</b>	1 910	215	1 492	305	1 408	61	660	9	9	18	6 060
<b>2007</b>	1 980	229	1 471	378	1 594	66	703	9	11	20	6 430
<b>2008</b>	2 065	245	1 478	411	1 587	67	773	14	9	23	6 641
<b>2008</b>											
Mar Qtr	2 028	235	1 466	412	1 551	66	737	13	10	23	6 507
Jun Qtr	2 070	242	1 511	418	1 530	65	756	13	8	22	6 605
Sep Qtr	2 082	255	1 482	401	1 604	70	782	15	8	22	6 690
Dec Qtr	2 080	248	1 456	413	1 663	67	815	17	10	27	6 758
<b>2009</b>											
Mar Qtr	2 191	250	1 499	448	1 678	67	911	20	7	27	7 064
Jan	2 135	249	1 469	444	1 659	64	899	19	9	29	6 938
Feb	2 194	248	1 497	444	1 687	66	915	20	6	26	7 072
Mar	2 245	253	1 530	455	1 689	72	919	20	6	26	7 183

— nil or rounded to zero (including null cells)

(a) Excludes persons whose Indigenous status is unknown – see Explanatory Notes, paragraph 33.

(b) Includes ACT prisoners held in NSW prisons. The ACT in NSW figures are a subset of the NSW figures and are not separately counted in the Australian totals – see Explanatory Notes, paragraph 17.

(c) Data prior to the September quarter 2007 may be slightly overstated – see Explanatory Notes, paragraph 37.

(d) Refers to unsentenced persons in ACT prison custody and may include some sentenced prisoners – see Explanatory Notes, paragraph 17.

(e) ACT in ACT figures and ACT in NSW figures may not add to ACT total due to rounding.

## INDIGENOUS IMPRISONMENT RATES(a)(b), By sex

	NSW(c)	Vic.	Qld(d)	SA	WA	Tas.	NT	ACT(e)	Aust.(d)
MALES (RATE PER 100,000 ADULT INDIGENOUS POPULATION)									
<b>2006</b>	4 318.0	2 288.5	3 604.8	3 591.2	6 382.1	1 038.6	3 577.3	1 366.7	4 006.0
<b>2007</b>	4 344.4	2 350.2	3 437.0	4 358.6	6 925.4	1 124.6	3 694.1	1 483.6	4 111.4
<b>2008</b>	4 441.5	2 427.3	3 348.3	4 669.6	6 863.4	1 107.1	3 969.5	1 552.3	4 160.6
<b>2008</b>									
Mar Qtr	4 353.6	2 326.9	3 319.6	4 646.2	6 644.3	1 072.1	3 796.0	1 434.9	4 064.0
Jun Qtr	4 402.7	2 403.0	3 441.3	4 764.2	6 625.7	1 088.5	3 897.8	1 472.6	4 134.6
Sep Qtr	4 515.9	2 522.5	3 341.6	4 565.3	6 952.3	1 141.6	3 997.5	1 487.4	4 197.2
Dec Qtr	4 491.3	2 454.5	3 291.1	4 703.3	7 224.1	1 125.2	4 182.0	1 810.9	4 244.4
<b>2009</b>									
Mar Qtr	4 604.5	2 375.6	3 280.9	4 878.9	7 074.1	1 106.4	4 603.2	1 764.8	4 308.2
Jan	4 504.1	2 368.5	3 224.0	4 841.4	7 021.1	1 057.0	4 550.4	1 857.0	4 245.9
Feb	4 620.6	2 352.2	3 278.5	4 817.7	7 107.4	1 091.5	4 634.5	1 723.0	4 314.9
Mar	4 690.3	2 403.9	3 339.8	4 971.6	7 096.9	1 169.3	4 627.8	1 710.3	4 364.2
FEMALES (RATE PER 100,000 ADULT INDIGENOUS POPULATION)									
<b>2006</b>	463.9	145.0	270.8	291.3	628.1	149.4	124.9	78.3	346.2
<b>2007</b>	488.2	158.1	267.7	336.1	793.4	138.5	167.3	68.6	384.5
<b>2008</b>	483.5	171.9	258.9	309.1	633.5	139.8	188.5	227.5	361.0
<b>2008</b>									
Mar Qtr	480.5	162.3	257.2	341.1	677.7	153.6	168.3	303.8	365.9
Jun Qtr	532.4	167.6	245.8	303.4	599.9	130.5	169.5	186.9	362.5
Sep Qtr	454.9	184.5	272.2	292.8	622.9	159.8	210.3	207.4	358.2
Dec Qtr	466.7	172.9	260.4	300.0	634.2	115.5	205.1	213.1	357.4
<b>2009</b>									
Mar Qtr	489.5	184.9	265.4	389.0	630.1	119.7	183.5	244.7	368.5
Jan	453.9	183.5	252.8	382.2	597.6	104.6	173.5	265.8	347.8
Feb	482.6	184.9	264.1	404.0	637.4	115.8	177.0	216.3	366.7
Mar	531.3	186.4	279.2	382.2	656.1	138.4	199.5	249.1	390.2
PERSONS (RATE PER 100,000 ADULT INDIGENOUS POPULATION)									
<b>2006</b>	2 336.5	1 202.2	1 860.2	1 881.1	3 404.6	586.0	1 810.6	715.1	2 116.2
<b>2007</b>	2 361.1	1 238.5	1 781.5	2 269.4	3 750.4	623.2	1 891.0	767.6	2 187.5
<b>2008</b>	2 407.0	1 283.9	1 740.0	2 401.5	3 637.1	617.0	2 038.5	882.9	2 201.6
<b>2008</b>									
Mar Qtr	2 362.8	1 229.5	1 725.3	2 406.9	3 554.3	606.7	1 943.4	863.3	2 157.4
Jun Qtr	2 413.3	1 269.8	1 777.7	2 444.0	3 505.1	603.1	1 993.8	822.9	2 189.8
Sep Qtr	2 428.5	1 337.3	1 743.6	2 343.0	3 674.4	644.1	2 063.4	840.6	2 217.9
Dec Qtr	2 422.6	1 297.9	1 713.3	2 412.9	3 811.3	613.6	2 151.0	1 003.5	2 240.3
<b>2009</b>									
Mar Qtr	2 491.0	1 265.2	1 714.1	2 543.4	3 740.6	607.5	2 350.6	996.3	2 279.4
Jan	2 423.9	1 261.0	1 680.3	2 521.9	3 698.1	575.4	2 319.6	1 052.7	2 238.8
Feb	2 495.3	1 253.6	1 712.3	2 521.9	3 760.4	598.1	2 362.6	961.3	2 281.9
Mar	2 554.3	1 279.9	1 749.6	2 584.3	3 765.0	648.0	2 370.8	971.6	2 317.9

- (a) The rates calculation uses the Indigenous population projections for 30 June of that calendar year as the denominator – see Explanatory Notes, paragraphs 25–27.
- (b) Excludes persons whose Indigenous status is unknown – see Explanatory Notes, paragraph 33.
- (c) Excludes ACT prisoners held in NSW prisons.
- (d) Data prior to the September quarter 2007 may be slightly overstated – see Explanatory Notes, paragraph 37.
- (e) Includes ACT prisoners held in ACT as well as ACT prisoners held in NSW – see Explanatory Notes, paragraph 19.

## INDIGENOUS PERSONS IN FULL-TIME CUSTODY(a)(b), By legal status

	NSW(c)	Vic.	Qld(d)	SA	WA	Tas.	NT	ACT in ACT(e)	ACT in NSW(c)	ACT Total(f)	Aust.(c)(d)
UNSENTENCED (NUMBER ON FIRST DAY OF MONTH)											
<b>2006</b>	441	48	285	116	241	19	140	10	—	10	1 300
<b>2007</b>	451	52	331	160	278	14	143	9	—	9	1 437
<b>2008</b>	492	52	335	169	307	15	174	14	—	14	1 560
<b>2008</b>											
Mar Qtr	515	51	353	173	297	14	176	12	—	12	1 591
Jun Qtr	507	53	355	181	319	15	163	14	—	14	1 607
Sep Qtr	462	52	341	154	313	13	176	14	—	14	1 526
Dec Qtr	486	54	293	169	300	16	182	16	—	16	1 516
<b>2009</b>											
Mar Qtr	569	53	312	197	300	18	238	19	—	19	1 707
SENTENCED (NUMBER ON FIRST DAY OF MONTH)											
<b>2006</b>	1 473	166	1 206	193	1 162	42	518	—	10	10	4 761
<b>2007</b>	1 520	176	1 135	217	1 311	53	564	—	10	10	4 975
<b>2008</b>	1 563	192	1 140	243	1 274	53	592	—	9	9	5 056
<b>2008</b>											
Mar Qtr	1 489	185	1 097	237	1 257	51	563	—	10	10	4 879
Jun Qtr	1 544	184	1 157	247	1 211	51	580	—	9	9	4 975
Sep Qtr	1 628	202	1 149	248	1 266	55	603	—	8	8	5 151
Dec Qtr	1 592	196	1 155	240	1 363	53	620	—	10	10	5 220
<b>2009</b>											
Mar Qtr	1 596	196	1 164	249	1 372	48	668	—	6	6	5 293
TOTAL (NUMBER ON FIRST DAY OF MONTH)											
<b>2006</b>	1 913	214	1 492	309	1 404	61	659	10	10	19	6 061
<b>2007</b>	1 971	228	1 466	377	1 589	67	706	9	10	19	6 412
<b>2008</b>	2 056	244	1 475	413	1 581	67	766	14	9	23	6 616
<b>2008</b>											
Mar Qtr	2 004	235	1 451	410	1 554	65	739	12	10	22	6 470
Jun Qtr	2 050	237	1 512	429	1 530	67	744	14	9	22	6 582
Sep Qtr	2 090	253	1 490	402	1 579	68	779	14	8	22	6 677
Dec Qtr	2 077	251	1 448	410	1 663	69	802	16	10	26	6 736
<b>2009</b>											
Mar Qtr	2 165	249	1 476	447	1 672	66	906	19	6	25	7 000

— nil or rounded to zero (including null cells)

(a) Figures for the quarter and year for first day of the month counts are calculated as a simple average – see Explanatory Notes, paragraph 5.

(b) Excludes persons whose Indigenous status is unknown – see Explanatory Notes, paragraph 33.

(c) Includes ACT prisoners held in NSW prisons. The ACT in NSW figures are a subset of the NSW figures and are not separately counted in the Australian totals – see Explanatory Notes, paragraph 17.

(d) Data prior to the September quarter 2007 may be slightly overstated – see Explanatory Notes, paragraph 37.

(e) Refers to unsentenced persons in ACT prison custody and may include some sentenced prisoners – see Explanatory Notes, paragraph 17.

(f) ACT in ACT figures and ACT in NSW figures may not add to ACT total due to rounding.



## INDIGENOUS IMPRISONMENT RATES(a)(b)(c), By legal status

	NSW(d)	Vic.	Qld(e)	SA	WA	Tas.	NT	ACT(f)	Aust.(e)
UNSENTENCED (RATE PER 100,000 ADULT INDIGENOUS POPULATION)									
<b>2006</b>	541.4	267.6	355.5	714.2	583.6	184.2	384.3	376.8	453.8
<b>2007</b>	540.3	281.1	401.5	960.8	653.0	133.0	383.2	335.8	488.8
<b>2008</b>	576.2	274.1	394.7	990.6	703.8	135.2	460.2	529.5	517.1
<b>2008</b>									
Mar Qtr	602.4	265.4	415.8	1 013.5	679.8	132.1	464.4	453.9	527.4
Jun Qtr	593.0	275.8	417.8	1 060.2	730.2	141.3	431.0	516.9	532.6
Sep Qtr	541.1	270.6	400.9	898.5	718.0	122.9	465.3	542.1	505.8
Dec Qtr	568.4	284.6	344.4	990.1	687.4	144.4	480.2	605.1	502.5
<b>2009</b>									
Mar Qtr	649.4	266.7	356.8	1 120.8	668.7	165.2	615.1	711.8	550.8
SENTENCED (RATE PER 100,000 ADULT INDIGENOUS POPULATION)									
<b>2006</b>	1 798.8	929.3	1 503.6	1 191.0	2 810.5	403.8	1 421.4	380.1	1 662.5
<b>2007</b>	1 810.2	952.4	1 374.7	1 300.9	3 084.6	497.4	1 515.7	400.4	1 692.5
<b>2008</b>	1 818.9	1 003.9	1 341.3	1 421.3	2 919.8	485.5	1 560.9	343.5	1 676.2
<b>2008</b>									
Mar Qtr	1 731.8	967.2	1 291.4	1 383.8	2 880.3	470.1	1 484.6	365.6	1 617.4
Jun Qtr	1 796.6	963.7	1 362.0	1 446.1	2 774.9	473.2	1 531.3	327.8	1 649.3
Sep Qtr	1 896.5	1 056.2	1 352.6	1 450.0	2 900.9	507.0	1 591.1	290.0	1 707.7
Dec Qtr	1 850.8	1 028.3	1 359.3	1 405.2	3 123.2	491.6	1 636.8	390.8	1 730.5
<b>2009</b>									
Mar Qtr	1 813.5	992.7	1 331.4	1 416.2	3 058.2	429.4	1 724.0	208.6	1 708.0
TOTAL (RATE PER 100,000 ADULT INDIGENOUS POPULATION)									
<b>2006</b>	2 340.2	1 196.9	1 859.1	1 905.2	3 394.1	588.0	1 805.8	757.0	2 116.2
<b>2007</b>	2 350.5	1 233.5	1 776.2	2 261.6	3 737.6	630.4	1 898.9	736.1	2 181.3
<b>2008</b>	2 395.2	1 278.0	1 736.1	2 411.9	3 623.7	620.6	2 021.2	873.0	2 193.3
<b>2008</b>									
Mar Qtr	2 334.2	1 232.6	1 707.2	2 397.2	3 560.1	602.2	1 949.0	819.5	2 144.8
Jun Qtr	2 389.6	1 239.5	1 779.8	2 506.4	3 505.1	614.5	1 962.2	844.7	2 182.0
Sep Qtr	2 437.6	1 326.8	1 753.5	2 348.5	3 618.9	629.9	2 056.3	832.1	2 213.5
Dec Qtr	2 419.3	1 312.9	1 703.7	2 395.3	3 810.6	636.0	2 117.0	996.0	2 233.0
<b>2009</b>									
Mar Qtr	2 462.9	1 259.4	1 688.2	2 537.0	3 726.9	594.5	2 339.2	920.5	2 258.8

- (a) The rates calculation uses the Indigenous population projection for 30 June of the relevant calendar year as the denominator – see Explanatory Notes, paragraphs 25–27.
- (b) Figures for the quarter and year for first day of the month counts are calculated as a simple average – see Explanatory Notes, paragraph 5.
- (c) Excludes persons whose Indigenous status is unknown – see Explanatory Notes, paragraph 33.
- (d) Excludes ACT prisoners in NSW prisons.
- (e) Data prior to the September quarter 2007 may be slightly overstated – see Explanatory Notes, paragraph 37.
- (f) Includes ACT prisoners held in ACT as well as ACT prisoners held in NSW – see Explanatory Notes, paragraph 19.

## PERSONS IN COMMUNITY-BASED CORRECTIONS(a)(b), By sex

	NSW	Vic.	Qld	SA(c)	WA(d)(e)	Tas.	NT	ACT	Aust.(f)
MALES (NUMBER ON FIRST DAY OF MONTH)									
<b>2006</b>	15 140	6 214	9 468	4 552	4 203	935	1 011	914	42 438
<b>2007</b>	15 195	6 245	9 928	4 586	4 071	913	1 036	977	42 950
<b>2008</b>	15 075	6 431	11 283	4 752	4 326	908	963	1 100	44 838
<b>2008</b>									
Mar Qtr	14 961	6 446	10 864	4 632	4 318	912	1 000	1 056	44 189
Jun Qtr	15 174	6 297	11 164	4 696	4 309	915	1 012	1 081	44 648
Sep Qtr	14 986	6 370	11 537	4 777	4 323	889	913	1 141	44 936
Dec Qtr	15 178	6 612	11 566	4 904	4 355	916	927	1 123	45 579
<b>2009</b>									
Mar Qtr	15 452	6 539	11 430	4 961	4 405	951	955	1 162	45 856
Jan	15 451	6 574	11 513	4 933	4 347	927	937	1 158	45 840
Feb	15 411	6 511	11 365	4 971	4 416	954	969	1 165	45 762
Mar	15 493	6 533	11 413	4 980	4 452	973	959	1 163	45 966
FEMALES (NUMBER ON FIRST DAY OF MONTH)									
<b>2006</b>	2 649	1 345	2 656	1 045	1 192	249	144	168	9 447
<b>2007</b>	2 739	1 438	2 656	1 084	1 158	246	138	161	9 619
<b>2008</b>	2 812	1 501	2 838	1 135	1 219	235	137	200	10 078
<b>2008</b>									
Mar Qtr	2 761	1 518	2 781	1 110	1 200	232	136	178	9 917
Jun Qtr	2 852	1 468	2 845	1 144	1 249	235	140	196	10 128
Sep Qtr	2 839	1 487	2 848	1 148	1 234	232	131	206	10 126
Dec Qtr	2 797	1 532	2 877	1 140	1 192	241	141	221	10 142
<b>2009</b>									
Mar Qtr	2 755	1 466	2 898	1 129	1 203	243	145	228	10 066
Jan	2 766	1 494	2 917	1 144	1 221	243	146	226	10 157
Feb	2 730	1 453	2 876	1 134	1 203	243	143	229	10 011
Mar	2 768	1 452	2 900	1 108	1 184	244	146	229	10 031
PERSONS (NUMBER ON FIRST DAY OF MONTH) (g)									
<b>2006</b>	17 843	7 601	12 124	5 597	5 395	1 184	1 155	1 082	51 981
<b>2007</b>	18 002	7 710	12 584	5 671	5 229	1 159	1 173	1 138	52 665
<b>2008</b>	17 954	7 950	14 120	5 888	5 545	1 143	1 100	1 301	55 001
<b>2008</b>									
Mar Qtr	17 777	7 989	13 645	5 742	5 518	1 144	1 136	1 234	54 185
Jun Qtr	18 089	7 787	14 009	5 840	5 558	1 150	1 152	1 277	54 862
Sep Qtr	17 898	7 874	14 385	5 926	5 557	1 121	1 044	1 347	55 152
Dec Qtr	18 052	8 150	14 443	6 045	5 547	1 158	1 068	1 344	55 806
<b>2009</b>									
Mar Qtr	18 280	8 012	14 328	6 093	5 608	1 195	1 100	1 390	56 006
Jan	18 288	8 073	14 430	6 079	5 568	1 170	1 083	1 384	56 075
Feb	18 216	7 969	14 241	6 109	5 619	1 197	1 112	1 394	55 857
Mar	18 337	7 993	14 313	6 092	5 636	1 217	1 105	1 392	56 085

- (a) Figures include persons with breached or suspended orders, with the exception of Vic. and Tas.
- (b) Figures for the quarter and year for first day of the month counts are calculated as a simple average – see Explanatory Notes, paragraph 5.
- (c) Data movements may be influenced by data entry delays – see Explanatory Notes, paragraph 39.

- (d) Data prior to the March quarter 2007 may be slightly overstated – see Explanatory Notes, paragraph 42.
- (e) Data are subject to processing delays of 4 to 6 weeks – see Explanatory Notes, paragraph 41.
- (f) See footnotes c-e.
- (g) Includes persons whose sex is unknown.

## COMMUNITY-BASED CORRECTIONS RATES(a)(b)(c), By sex

	NSW	Vic.	Qld	SA(d)	WA(e)(f)	Tas.	NT	ACT	Aust.(g)
MALES (RATE PER 100,000 ADULT POPULATION)									
<b>2006</b>	588.9	326.1	616.9	769.9	545.6	517.5	1 306.7	740.5	547.3
<b>2007</b>	588.6	320.2	629.2	764.7	512.8	500.7	1 307.0	766.0	544.2
<b>2008</b>	577.8	323.4	697.4	782.0	528.7	492.6	1 181.4	844.5	557.9
<b>2008</b>									
Mar Qtr	576.5	326.3	677.9	766.0	533.8	497.1	1 239.2	814.6	553.7
Jun Qtr	583.0	317.9	692.7	774.7	529.4	497.2	1 245.6	834.1	557.4
Sep Qtr	573.2	319.6	710.7	784.5	526.0	481.1	1 118.7	874.2	557.6
Dec Qtr	578.4	330.0	707.8	802.7	525.8	495.0	1 123.7	854.8	562.7
<b>2009</b>									
Mar Qtr	584.3	323.1	692.5	809.5	524.6	513.5	1 158.6	879.0	561.2
Jan	584.3	324.8	697.6	804.9	517.7	500.3	1 136.8	875.9	561.0
Feb	582.8	321.7	688.6	811.1	525.9	514.9	1 175.6	881.2	560.0
Mar	585.9	322.8	691.5	812.6	530.2	525.1	1 163.5	879.7	562.5
FEMALES (RATE PER 100,000 ADULT POPULATION)									
<b>2006</b>	100.0	67.4	170.6	170.4	153.8	131.2	211.0	130.8	118.4
<b>2007</b>	102.3	70.7	165.5	173.2	146.5	127.7	191.4	121.7	118.3
<b>2008</b>	103.6	72.4	172.2	178.7	150.5	121.0	184.1	148.9	121.7
<b>2008</b>									
Mar Qtr	102.4	73.8	170.4	175.6	149.9	120.1	184.5	133.2	120.6
Jun Qtr	105.3	71.0	173.2	180.4	154.8	120.9	188.7	146.1	122.6
Sep Qtr	104.4	71.5	172.3	180.3	151.8	119.1	175.9	153.1	121.9
Dec Qtr	102.5	73.4	173.0	178.7	145.7	123.7	187.3	163.1	121.6
<b>2009</b>									
Mar Qtr	100.2	69.7	172.6	176.1	145.4	124.6	190.3	167.2	119.7
Jan	100.6	71.0	173.8	178.5	147.6	124.4	191.6	165.7	120.8
Feb	99.3	69.0	171.3	176.9	145.5	124.4	187.7	167.9	119.1
Mar	100.7	69.0	172.7	172.9	143.2	124.9	191.6	167.9	119.3
PERSONS (RATE PER 100,000 ADULT POPULATION) (h)									
<b>2006</b>	341.9	194.7	392.2	464.7	349.0	319.5	794.1	430.1	330.4
<b>2007</b>	342.3	193.5	395.3	462.7	330.1	309.3	776.4	438.4	328.7
<b>2008</b>	337.3	195.7	432.4	473.7	340.6	301.9	704.9	491.1	337.0
<b>2008</b>									
Mar Qtr	335.8	198.0	421.8	464.3	342.8	303.6	735.1	468.4	334.4
Jun Qtr	340.6	192.4	430.5	470.9	342.9	304.1	740.4	484.3	337.2
Sep Qtr	335.5	193.3	439.0	475.8	339.9	295.4	668.2	507.8	337.0
Dec Qtr	337.2	199.2	438.0	483.9	336.9	304.4	676.8	503.6	339.4
<b>2009</b>									
Mar Qtr	338.9	194.1	430.4	486.0	336.4	313.9	693.4	517.6	337.8
Jan	339.0	195.6	433.4	484.9	334.0	307.4	682.7	515.3	338.2
Feb	337.7	193.0	427.7	487.2	337.1	314.5	701.0	519.1	336.9
Mar	340.0	193.6	429.9	485.9	338.1	319.7	696.6	518.3	338.3

(a) Imprisonment rates are based on different sources – see Explanatory Notes, paragraphs 20–24.

(b) Figures include persons with breached or suspended orders, with the exception of Vic. and Tas.

(c) Figures for the quarter and year for the first day of the month are calculated as a simple average – see Explanatory Notes, paragraph 5.

(d) Data movements may be influenced by data entry delays – see Explanatory Notes, paragraph 39.

(e) Data prior to the March quarter 2007 may be slightly overstated – see Explanatory Notes, paragraph 42.

(f) Data are subject to processing delays of 4 to 6 weeks – see Explanatory Notes, paragraph 41.

(g) See footnotes d-f.

(h) Includes persons whose sex is unknown.

	NSW	Vic.	Qld(d)	SA(e)	WA(f)(g)	Tas.(h)	NT	ACT(i)	Aust.(j)
RESTRICTED MOVEMENT (NUMBER ON FIRST DAY OF MONTH)									
<b>2006</b>	205	25	44	424	10	..	38	..	746
<b>2007</b>	197	31	..	391	5	..	34	..	659
<b>2008</b>	151	31	..	421	6	..	32	..	640
<b>2008</b>									
Mar Qtr	122	34	..	375	7	..	33	..	571
Jun Qtr	135	31	..	426	5	..	38	..	635
Sep Qtr	168	29	..	421	6	..	27	..	651
Dec Qtr	177	29	..	463	5	..	30	..	704
<b>2009</b>									
Mar Qtr	177	38	..	482	3	..	27	..	728
Jan	165	39	..	477	np	..	np	..	710
Feb	176	38	..	496	np	..	np	..	741
Mar	190	37	..	474	np	..	np	..	732
REPARATION-FINE OPTION (NUMBER ON FIRST DAY OF MONTH)									
<b>2006</b>	84	1 214	1 321	774	240	112	1	..	3 744
<b>2007</b>	49	1 710	843	702	192	85	—	..	3 580
<b>2008</b>	16	1 763	542	646	208	50	—	..	3 224
<b>2008</b>									
Mar Qtr	15	2 032	564	662	195	67	—	..	3 534
Jun Qtr	12	1 803	589	659	197	55	—	..	3 316
Sep Qtr	12	1 602	563	648	229	41	—	..	3 095
Dec Qtr	23	1 613	454	614	210	37	—	..	2 952
<b>2009</b>									
Mar Qtr	20	1 673	398	599	240	36	—	..	2 966
Jan	23	1 677	402	591	217	38	—	..	2 948
Feb	21	1 676	386	587	255	35	—	..	2 960
Mar	15	1 667	406	618	249	34	—	..	2 989
REPARATION-COMMUNITY SERVICE (NUMBER ON FIRST DAY OF MONTH)									
<b>2006</b>	4 436	876	2 045	1 125	1 967	501	198	85	11 233
<b>2007</b>	4 160	672	1 857	1 033	1 622	495	221	115	10 174
<b>2008</b>	3 979	679	1 854	1 005	1 473	500	184	161	9 835
<b>2008</b>									
Mar Qtr	3 891	635	1 839	955	1 536	486	202	141	9 685
Jun Qtr	4 042	673	1 869	988	1 494	485	193	166	9 911
Sep Qtr	3 967	728	1 857	1 034	1 454	503	168	170	9 881
Dec Qtr	4 014	678	1 852	1 043	1 408	527	172	169	9 863
<b>2009</b>									
Mar Qtr	4 046	697	1 761	1 090	1 377	555	172	172	9 870
Jan	3 963	713	1 787	1 067	1 375	535	164	154	9 758
Feb	4 033	672	1 747	1 088	1 379	563	176	171	9 829
Mar	4 142	706	1 748	1 114	1 378	568	177	191	10 024

.. not applicable

— nil or rounded to zero (including null cells)

np not available for publication but included in totals where applicable, unless otherwise indicated

(a) If a person has more than one type of order, they are counted against each order in this table. If a person has more than one order of the same order type, they are counted only once in the order type.

(b) Figures for the quarter and year for first day of the month counts are calculated as a simple average – see Explanatory Notes, paragraph 5.

(c) Figures include persons with breached or suspended orders, with the exception of Vic. and Tas.

(d) From July 2006, restricted movement and parole orders have been affected by legislative changes – see Explanatory Notes, paragraph 38.

(e) Data movements may be influenced by data entry delays – see Explanatory Notes, paragraph 39.

(f) Data prior to the March quarter 2007 may be slightly overstated – see Explanatory Notes, paragraph 42.

(g) Data are subject to processing delays of 4 to 6 weeks – see Explanatory Notes, paragraph 41.

(h) Tas. conducted a trial of new bail orders in the 2007-08 financial year – see Explanatory Notes, paragraph 43.

(i) Data movements for bail orders may be influenced by data quality checks during the December quarter 2008 – see Explanatory Notes, paragraph 45.

(j) See footnotes d-i.

	NSW	Vic.	Qld(d)	SA(e)	WA(f)(g)	Tas.(h)	NT	ACT(i)	Aust.(j)
SUPERVISION (COMPLIANCE)–PAROLE (NUMBER ON FIRST DAY OF MONTH)									
<b>2006</b>	3 949	1 460	975	894	1 279	86	113	136	8 890
<b>2007</b>	4 058	1 413	2 290	882	1 143	81	99	117	10 083
<b>2008</b>	4 246	1 494	3 793	903	1 317	96	90	113	12 051
<b>2008</b>									
Mar Qtr	4 161	1 476	3 420	872	1 293	82	96	118	11 518
Jun Qtr	4 180	1 495	3 655	893	1 326	91	102	117	11 857
Sep Qtr	4 255	1 505	3 969	904	1 309	101	84	114	12 241
Dec Qtr	4 387	1 500	4 127	942	1 342	109	76	103	12 587
<b>2009</b>									
Mar Qtr	4 339	1 508	4 151	983	1 426	116	75	96	12 694
Jan	4 376	1 498	4 204	971	1 399	112	77	98	12 735
Feb	4 356	1 531	4 086	990	1 427	113	74	95	12 672
Mar	4 284	1 495	4 164	988	1 451	122	75	95	12 674

SUPERVISION (COMPLIANCE)–BAIL (NUMBER ON FIRST DAY OF MONTH)									
<b>2006</b>	214	..	..	888	243	..	4	174	1 523
<b>2007</b>	226	..	..	1 019	245	8	7	215	1 721
<b>2008</b>	226	..	..	858	275	18	5	229	1 612
<b>2008</b>									
Mar Qtr	227	..	..	893	251	40	5	238	1 654
Jun Qtr	220	..	..	859	262	28	6	230	1 605
Sep Qtr	233	..	..	838	296	4	6	268	1 645
Dec Qtr	222	..	..	844	292	..	4	181	1 544
<b>2009</b>									
Mar Qtr	215	..	..	867	276	..	10	194	1 561
Jan	227	..	..	848	272	..	7	197	1 551
Feb	214	..	..	878	278	..	9	193	1 572
Mar	204	..	..	874	277	..	13	193	1 561

SUPERVISION (COMPLIANCE)–SENTENCED PROBATION (NUMBER ON FIRST DAY OF MONTH)									
<b>2006</b>	10 923	4 294	8 855	2 631	3 556	642	837	784	32 523
<b>2007</b>	11 198	4 093	8 680	2 803	3 485	645	853	840	32 598
<b>2008</b>	11 098	4 184	9 040	3 161	3 645	636	819	1 026	33 609
<b>2008</b>									
Mar Qtr	11 100	4 125	8 910	3 046	3 672	634	833	942	33 262
Jun Qtr	11 274	4 089	9 032	3 115	3 657	620	847	997	33 631
Sep Qtr	11 030	4 271	9 121	3 211	3 653	626	788	1 057	33 756
Dec Qtr	10 988	4 250	9 097	3 271	3 600	663	810	1 107	33 785
<b>2009</b>									
Mar Qtr	11 212	4 428	9 061	3 267	3 557	683	841	1 146	34 197
Jan	11 029	4 478	9 077	3 310	3 579	677	831	1 141	34 122
Feb	11 243	4 378	9 051	3 263	3 551	683	851	1 149	34 169
Mar	11 365	4 429	9 056	3 229	3 542	689	842	1 148	34 300

.. not applicable

- (a) If a person has more than one type of order, they are counted against each order in this table. If a person has more than one order of the same order type, they are counted only once in the order type.
- (b) Figures for the quarter and year for first day of the month counts are calculated as a simple average – see Explanatory Notes, paragraph 5.
- (c) Figures include persons with breached or suspended orders, with the exception of Vic. and Tas.
- (d) From July 2006, restricted movement and parole orders have been affected by legislative changes – see Explanatory Notes, paragraph 38.

- (e) Data movements may be influenced by data entry delays – see Explanatory Notes, paragraph 39.
- (f) Data prior to the March quarter 2007 may be slightly overstated – see Explanatory Notes, paragraph 42.
- (g) Data are subject to processing delays of 4 to 6 weeks – see Explanatory Notes, paragraph 41.
- (h) Tas. conducted a trial of new bail orders in the 2007-08 financial year – see Explanatory Notes, paragraph 43.
- (i) Data movements for bail orders may be influenced by data quality checks during the December quarter 2008 – see Explanatory Notes, paragraph 45.
- (j) See footnotes d-i.

## EXPLANATORY NOTES

### INTRODUCTION

**1** This publication presents statistical series on persons held in either adult corrective services custody or who are serving adult community-based orders in Australia. It contains data on the number of persons by their sex, Indigenous status, type of custody, legal status and sentence type; the number of sentenced persons received into corrective services custody each month; and the number of federal prisoners. Experimental data on Indigenous persons in community based corrections are also available in the Appendix.

**2** Statistics presented in this publication are compiled in three ways:

- Average daily prisoner population: Counts taken on each day of the month are summed and divided by the number of days in that month to determine the average daily prisoner population for that month. The average daily periodic detainee population is a count of persons on periodic detention on each day a centre is open, divided by the number of days a centre is open.
- Sentenced prisoner reception figures: Counts are provided each month on the number of receptions where a prisoner is received as a sentenced prisoner. This includes prisoners with a change of legal status from unsentenced to sentenced.
- First day of the month prisoner population: Counts of prisoners and persons serving community-based corrections orders, taken on or near the first day of the month (see paragraphs 4 and 5).

**3** Although national standards and classifications are used in the compilation of these statistics, some discrepancies remain between the states and territories. These are due to legislative and procedural differences between jurisdictions and the way that these differences are reflected in agencies' administrative data systems. As part of its quality assurance strategy, the ABS is working with corrective services agencies to minimise the effect of these differences.

### REFERENCE PERIOD

**4** The reference period for average daily prisoner population statistics and sentenced reception counts is the complete reference month. The reference date for all other figures is the first day of the reference month. However, not all states and territories report strictly according to this 'first day of the month' rule:

- The Western Australian, Victorian and Australian Capital Territory prisoners in New South Wales prisons populations are counted as at midnight on the last day of the month. In these cases the figures provided are taken to represent the prison population at the beginning of the following month to align with practices in other states and territories.

**5** Calculation of figures for the entire quarter and entire year varies depending on the counting unit and method of counting prisoners:

- Average daily figures: Figures are calculated by weighting the average according to the number of days in each month, quarter or year.
- First day of the month: Figures are simple averages. For quarterly figures, the sum of the monthly data is divided by three; for yearly figures, the figures for each month are added and the total divided by twelve.
- Sentenced receptions: Figures are totals of each month.
- These figures may be subject to rounding.

### SCOPE

**6** The scope of the statistics in this publication includes all persons remanded or sentenced to adult custodial corrective services agencies (including Work Outreach Camps and Community Custody Centres in Queensland), or who are serving adult community-based orders in each state and territory in Australia.

## EXPLANATORY NOTES *continued*

### SCOPE *continued*

**7** Counts of prisoners in the following custodial facilities are included in the collection:

- gazetted prisons in all jurisdictions;
- periodic detention centres in New South Wales and the Australian Capital Territory;
- community custody centres and work outreach camps in Queensland;
- cells in court complexes administered by corrective services in New South Wales;
- transitional centres in New South Wales; and
- lock-ups in Western Australia operated by the police but designated as a prison by the Chief Executive Officer of Corrective Services.

**8** The prisons and community corrections collection excludes the following custodial facilities:

- police lockups, police prisons and cells in court complexes not administered and controlled by corrective services;
- gazetted police prisons in the Northern Territory;
- juvenile detention centres, including those under the authority of adult corrective services;
- immigration detention centres; and
- military prisons.

**9** This collection includes counts of persons remanded or sentenced to adult custody facilities, or directed to serve community based orders administered by adult corrective services agencies. In all states and territories except Queensland, persons are considered adults if aged 18 years and over. In Queensland persons are considered adults if aged 17 years and over. The vast majority of persons counted in the collection are adults. However, juveniles may be included in exceptional circumstances.

**10** Since December 2004, the Kariong Juvenile Correctional Centre in New South Wales has operated under the authority of adult corrective services. The population at Kariong Juvenile Correctional Centre may include adult persons as well as juveniles. New South Wales includes juveniles based in Kariong in this collection, however, this facility accounts for less than 0.5% of the New South Wales prisoner population.

**11** Federal prisoners include those persons charged and sentenced under a Commonwealth statute, and those persons who are charged and sentenced under the laws of another country but transferred to an Australian prison to serve their sentence under the *International Transfer of Prisoners Act 1997* (Cwlth). To give practical effect to this legislation in Australia, the framework was introduced in January 2003. For the purposes of this publication, federal sentenced prisoners are those persons who are recognised by the Criminal Law Division of the Australian Government Attorney-General's Department as having been charged and sentenced under a Commonwealth statute, or transferred from another country to serve their sentence in Australia.

**12** With the exception of Victoria and Tasmania, community-based corrections includes those persons with breached or suspended orders.

### DATA SOURCE

**13** Statistics in this publication are derived from information provided to the ABS from administrative records held by corrective services agencies within each state and territory. Statistics on federal prisoners are derived from records kept by the Criminal Law Division of the Australian Government Attorney-General's Department.

### COUNTING RULES

**14** Statistics for persons held in custody are presented by the state or territory in which they were held and therefore may not be the sentencing jurisdiction. The only exception to this are data for federal sentenced prisoners. These are presented by the state or territory in which they were sentenced, not where they were held in custody.

## EXPLANATORY NOTES *continued*

### COUNTING RULES *continued*

**15** Sentenced prisoners who have other offences that are unsentenced are counted as sentenced. Prisoners may be unsentenced because they are awaiting the outcome of their trial, convicted but awaiting sentence, or awaiting deportation.

**16** If an offender has two or more different types of community-based orders operating simultaneously, then each order will be counted. If two or more community-based orders are of the same type, these orders together will only be counted as one order.

### AUSTRALIAN CAPITAL TERRITORY PRISONERS

**17** Persons sentenced to full-time custody by the Australian Capital Territory are usually held in New South Wales prisons. The Australian Capital Territory has two remand centres for unsentenced prisoners and a periodic detention centre. During 2000 the Australian Capital Territory commenced detaining prisoners sentenced for fine default only at their remand centres. Unsented Australian Capital Territory prisoners may also be detained in New South Wales prisons.

**18** To provide greater understanding of the number of prisoners attributed to the Australian Capital Territory, while presenting an accurate picture of the New South Wales prisoner population, statistics relating to Australian Capital Territory prisoners in New South Wales prisons are presented as a subset of the New South Wales figures.

**19** Imprisonment rate data for the Australian Capital Territory are included in the publication and are calculated on the basis of the total number of Australian Capital Territory prisoners (i.e. Australian Capital Territory prisoners held in New South Wales prisons, and Australian Capital Territory prisoners held in the Australian Capital Territory) divided by the estimated resident Australian Capital Territory adult population and multiplied by 100,000. For New South Wales, the imprisonment rate is based on the count of New South Wales prisoners, excluding Australian Capital Territory prisoners held in New South Wales prisons, divided by the estimated resident New South Wales adult population and multiplied by 100,000. Time series data have also been derived on this basis.

### RATES

**20** Imprisonment and community-based corrections rates enable comparisons of prisoner numbers to be made across states and territories. Prisoner and community-based corrections rates are expressed per 100,000 adult population. Imprisonment rates are calculated based on two different counting concepts (average daily and first day of the month), as a result there may be variations in imprisonment rates presented in this publication.

**21** In this publication the population figures used in the calculation of rates are for persons aged 18 years and over for all states and territories except Queensland where the population is persons aged 17 years and over (see paragraph 9).

**22** Rates for the total adult prisoner population and persons in community-based corrections are calculated using the estimated resident population (ERP) for each of the states and territories. All estimates for the Australian Capital Territory exclude Jervis Bay Territory. All estimates for Australia exclude the external territories of Christmas Island and the Cocos (Keeling) Island. As the population changes over time the denominator used for the calculation of rates varies, depending on the reference period. The most current ERP data available at the time of publication are used to calculate rates as follows:

- for the March quarter, ERP is from the previous September quarter;
- for the June quarter, ERP is from the previous December quarter;
- for the September quarter, ERP is from the previous March quarter;
- for the December quarter, ERP is from the previous June quarter; and
- annual rates are an average of the rates of the contributing quarters.



## EXPLANATORY NOTES *continued*

### RATES *continued*

**23** The ERP series are revised every five years to incorporate additional information available from the latest Census of Population and Housing. The rates per 100,000 adult persons presented in this issue have been calculated using different ERP counts as follows:

- Rates from the June 2007 quarter (except for Indigenous rates) are calculated using rebased data from the recent intercensal period (2001-2006) sourced from the 2006 Census of Population and Housing;
- All other rates are calculated using ERP data based on the 2001 Census of Population and Housing.

**24** For population estimates and information on the methodology used to produce the ERP, see *Australian Demographic Statistics* (cat.no.3101.0).

### Indigenous imprisonment rates

**25** Rates for the Indigenous adult population in this publication are based on the low series projections for 30 June of the relevant calendar year (refer to *Experimental Estimates and Projections, Aboriginal and Torres Strait Islander Australians, 30 June 1991 to 30 June 2009* (cat.no.3238.0)). These projections are based on the 2001 Census of Population and Housing. New series of Indigenous population projections are scheduled for release in 2009 and will be based on the 2006 Census of Population and Housing.

**26** The low series is one of two series of projections that have been published for the years 2002 to 2009.

- The low series assumes no 'unexplained growth' – that is, the Indigenous population recorded in the 2001 Census of Population and Housing is projected to change only as a result of births and deaths (natural increase) and, for the states and territories, as a result of interstate migration.
- The high series assumes that there will be 'unexplained growth' in the Indigenous population – that is, the Indigenous population is projected to change as a result of an unexplained component in addition to the effects of natural increase and interstate migration. The size of the unexplained component is based on the 'unexplained growth' observed between the 1996 and 2001 Censuses.

**27** The decision to use the low series as the denominator in the calculation of Indigenous imprisonment rates from 2002 followed consultation with the National Corrective Services Statistics Unit Advisory Group and other stakeholders.

### INDIGENOUS IDENTIFICATION

**28** The ABS conducts an ongoing programme of quality assurance to monitor and improve the quality of Indigenous Status data in Corrective Services agencies (both custodial and community-based corrections). Whilst the ABS has published Indigenous status data in Corrective Services collections for a number of years, quality assurance is required to better understand the level of accuracy over time

**29** The quality of the Indigenous status information collected and recorded in Corrective Services agencies is assessed against the ABS Standard Indigenous Question (SIQ). The SIQ is based upon self-identification by the individual who comes into contact with Corrective Services agencies. The SIQ requires individuals to be asked "Are you of Aboriginal or Torres Strait Islander origin?" The answers to the SIQ can be 'No', 'Yes, Aboriginal', or 'Yes, Torres Strait Islander'. If the offender is of Aboriginal and Torres Strait Islander origin, both responses should be identified. If an offender does not supply an answer to this question, or is not asked, the Indigenous status field should be recorded as 'not stated'.

## EXPLANATORY NOTES *continued*

### INDIGENOUS IDENTIFICATION

*continued*

**30** As a result, the minimum output categories required in systems are:

- Aboriginal, but not Torres Strait Islander origin
- Torres Strait, but not Aboriginal origin
- Both Aboriginal and Torres Strait Islander origin
- Neither Aboriginal nor Torres Strait Islander origin
- Not stated/inadequately described

**31** For custodial corrections, initial indications are that corrective services agencies in all states and territories, with the exception of Western Australia, ask the SIQ as described above. South Australia asks a variation of the ABS' SIQ which generates the equivalent output categories for Indigenous Status.

**32** Initial review suggests that corrective services agencies in all states and territories except Western Australia currently enter and store the ABS SIQ appropriately in recording systems for custodial data. For more information about Indigenous identification in community-based corrections refer to Appendix.

**33** Some persons in custody are recorded with an unknown Indigenous status on the information systems of corrective agencies as their status has not been able to be obtained. Persons with Indigenous status unknown are excluded from tables 6, 7, 12 and 13. Counts of persons with an unknown Indigenous status are included in all other tables. Unknowns account for just over 1% of all records.

### SIGNIFICANT EVENTS

*New South Wales*

**34** In March 2008, the administrative classification of the Wellington Correctional Centre was altered. The classification was changed from 'open' to 'secure' for 75% of the facility to reflect the change in the profile of inmates held. As such, the proportion of persons in secure and open custody altered in the March quarter 2008 compared to previous quarters.

*Victoria*

**35** The State government introduced an amnesty from February 2006 to May 2006 to encourage payment of unpaid fines. This resulted in a decrease in the number of persons serving a community-based reparation - fine option order, particularly for the September quarter 2006.

**36** In March 2006, Victoria opened Marngoneet Correctional Centre, Lara. The focus of this facility is to provide intensive treatment and offender management programs for males who have a minimum of six months of their sentence left to serve when they arrive there. The new Metropolitan Remand Centre at Ravenhall was opened in April 2006. The facility provides increased capacity to hold prisoners awaiting trial or sentencing.

*Queensland*

**37** Quality assurance work conducted in Queensland during the September quarter 2007 resulted in the identification and elimination of duplicate and other records for the month of July 2007. Caution should be exercised when comparing data prior to the September quarter 2007.

**38** *The Corrective Services Act 2006* (Qld) commenced on 26 August 2006. One key provision in the new legislation relates to the management of offenders subject to Court-ordered Parole. This new order ensures that offenders serve 100% of their sentence under supervision, either in a correctional centre or under community supervision. This new order provides courts with the power to specify a parole release date for persons sentenced to a term of imprisonment of 3 years or less. Technical breaches of parole orders are no longer heard by a parole board and can often result in a person serving the remainder of their original sentence in custody. Court-ordered Parole is not available to sex offenders or serious violent offenders.

## EXPLANATORY NOTES *continued*

### *South Australia*

**39** Data on community-based correction orders extracted from the South Australian information system from the June quarter 2005 may be subject to data processing time lags.

### *Western Australia*

**40** Data for persons in secure and open custody is extracted on the basis of the prisoner's security rating, rather than the location of the prisoner as per the standard definition (see Glossary). As a result, prisoners with a minimum security rating and located in a medium or maximum security prison are counted in the open custody numbers. Data for persons in secure custody may be understated and data for persons in open custody may be overstated.

**41** Data for community-based correction orders extracted from the Western Australian information system are subject to data processing time lags of 4-6 weeks. Fine option orders are most likely to be impacted by the lag, with approximately 10% of each month's data entry delayed.

**42** Caution should be exercised when comparing community-based correction orders in Western Australia prior to the March quarter 2007 as data may have been slightly overstated.

### *Tasmania*

**43** Tasmania was involved in a trial of new orders for bail, suspended sentences and drug treatment as part of the Court Mandated Diversion program (CMD) from 1 July 2007 to 30 June 2008. Counts for supervision (compliance) - bail orders during the September quarter 2008 represent the transitional period concluding this trial. These orders are now being handled by alternative service providers.

**44** The new Risdon Prison Complex in Tasmania was opened on 28 August 2006. This complex includes the Mary Hutchison Women's Prison which was opened in May 2006. A new men's maximum/medium security facility was also built within the complex.

### *Australian Capital Territory*

**45** The decline in supervision bail compliance orders in December 2008 may have been partly influenced by data quality checks. Records with no completion or expiry date that should have been finalised on the system were marked as completed during this period.

**46** A new custodial facility, the Alexander Maconochie Centre, opened in the Australian Capital Territory in September 2008. It began accommodating prisoners on 30 March 2009.

## RELATED PUBLICATIONS

### *ABS Publications*

**47** Other ABS publications that may be of interest include:

*Australian Demographic Statistics* (cat.no.3101.0) – issued quarterly

*Australian Social Trends* (cat.no.4102.0) – issued annually

*Australian Standard Offence Classification* (cat.no.1234.0) – released 1 August 2008

*Crime and Safety, Australia* (cat.no.4509.0) – released 26 April 2006

*Criminal Courts, Australia* (cat.no.4513.0) – issued annually

*Experimental Estimates and Projections, Aboriginal and Torres Strait Islander Australians, 30 June 1991 to 30 June 2009* (cat. no. 3238.0)

*General Social Survey: Summary Results, Australia* (cat.no.4159.0) – irregular  
*Information Paper: Measuring Crime Victimisation, Australia: The Impact of Different Collection Methodologies* (cat.no.4522.0.55.001) – single issue

*Information Paper: National Criminal Justice Statistical Framework* (cat.no. 4525.0) – single issue

*Information Paper: National Information Development Plan for Crime and Justice Statistics 2005* (cat.no.4520.0) – single issue

*Measures of Australia's Progress* (cat.no.1370.0) – released 31 May 2006

*Personal Fraud Survey* (cat.no.4528.0) – released 27 June 2008

## EXPLANATORY NOTES *continued*

### ABS Publications *continued*

*Personal Safety Survey* (cat.no.4906.0) – released 21 August 2006

*Prisoners in Australia* (cat.no.4517.0) – issued annually

*Recorded Crime – Victims, Australia* (cat.no.4510.0) – issued annually

*Sexual Assault in Australia: A Statistical Overview* (cat.no.4523.0) – single issue

**48** Current publications and other products released by the ABS are available from the ABS website <<http://www.abs.gov.au>>. The ABS also issues a daily Release Advice on the website that details products to be released in the week ahead. The National Centre for Crime and Justice Statistics releases *Crime and Justice News* (cat. no. 4500.0), an annual newsletter that is published on the ABS website. The Centre can be contacted by email through <[crime.justice@abs.gov.au](mailto:crime.justice@abs.gov.au)>.

### Non-ABS Publications

**49** Non-ABS sources that may be of interest include:

Australian Institute of Criminology, *List of Publications* – irregular

<<http://www.aic.gov.au>>

Crime Research Centre, University of Western Australia, *Crime and Justice Statistics for Western Australia* – issued annually

<<http://www.crc.law.uwa.edu.au>>

Department of Corrective Services, New South Wales, *NSW Inmate Census* – irregular

<<http://www.dcs.nsw.gov.au>>

Department of Justice, Northern Territory, *Northern Territory Quarterly Crime and Justice Statistics* – issued quarterly

<<http://www.nt.gov.au/justice/>>

Department of Justice, Victoria, *Statistical Profile of the Victorian Prison System* – issued annually

<<http://www.justice.vic.gov.au>>

NSW Bureau of Crime Statistics and Research, *New South Wales Criminal Courts Statistics* – issued annually

<<http://www.lawlink.nsw.gov.au>>

Office of Crime Statistics and Research, *South Australia, Crime and Justice in South Australia* – issued annually

<<http://www.ocsar.sa.gov.au>>

Steering Committee for the Review of Commonwealth/State Service Provision, *Report on Government Services* – issued annually

<<http://www.pc.gov.au>>

### INTRODUCTION

This appendix presents experimental data for Indigenous persons in community-based corrections. Data are presented as the number of Indigenous persons on community-based corrections orders on the first day of the month.

An initial evaluation of the quality of Indigenous identification by the ABS in community-based corrections has highlighted that currently most jurisdictions comply with the requirements of the ABS Standard Indigenous Question (SIQ - see Explanatory Notes, paragraph 29). As Indigenous Status data for persons under the supervision of Community-Based Corrections are still experimental, care should be taken when referring to this data. It should be noted that both Western Australia and the Northern Territory ask offenders variations of the SIQ which do not contain all the necessary elements of the ABS question and are unable to hold the SIQ appropriately in recording systems. The ABS will continue to work with states and territories to better understand and improve the quality of this data item.

# APPENDIX EXPERIMENTAL COMMUNITY-BASED CORRECTIONS DATA

*continued*

## A1 PERSONS IN COMMUNITY-BASED CORRECTIONS(a)(b), By Indigenous status

	NSW	Vic.	Qld	SA(c)	WA(d)(e)	Tas.	NT	ACT	Aust. (f)
INDIGENOUS (NUMBER ON FIRST DAY OF MONTH)									
<b>2006</b>	2 908	324	2 146	746	1 777	141	846	81	8 969
<b>2007</b>	3 198	341	2 267	816	1 643	137	880	100	9 380
<b>2008</b>	3 178	353	2 556	928	1 815	132	847	125	9 935
<b>2008</b>									
Mar Qtr	3 134	355	2 461	850	1 762	132	858	106	9 658
Jun Qtr	3 192	352	2 547	896	1 838	129	873	116	9 944
Sep Qtr	3 174	346	2 598	963	1 811	128	823	131	9 974
Dec Qtr	3 212	359	2 617	1 003	1 850	137	834	149	10 163
<b>2009</b>									
Mar Qtr	3 206	380	2 686	1 011	1 928	153	863	150	10 376
Jan	3 241	376	2 660	1 012	1 908	152	848	148	10 345
Feb	3 210	379	2 666	1 010	1 940	151	876	147	10 379
Mar	3 168	384	2 732	1 010	1 937	155	864	154	10 404
NON-INDIGENOUS (NUMBER ON FIRST DAY OF MONTH)									
<b>2006</b>	13 835	6 675	9 978	4 793	3 613	946	307	876	41 024
<b>2007</b>	13 843	6 707	10 317	4 809	3 580	970	291	959	41 476
<b>2008</b>	13 793	6 946	11 564	4 919	3 715	970	252	1 075	43 234
<b>2008</b>									
Mar Qtr	13 792	7 048	11 183	4 862	3 739	953	276	1 016	42 869
Jun Qtr	14 014	6 928	11 461	4 900	3 700	959	279	1 044	43 286
Sep Qtr	13 772	6 983	11 787	4 913	3 730	974	221	1 094	43 474
Dec Qtr	13 593	6 826	11 826	5 000	3 691	996	231	1 145	43 307
<b>2009</b>									
Mar Qtr	13 541	6 283	11 642	5 026	3 668	1 004	234	1 170	42 568
Jan	13 646	6 440	11 770	5 013	3 651	984	232	1 152	42 888
Feb	13 425	6 280	11 575	5 043	3 668	1 009	233	1 149	42 382
Mar	13 553	6 128	11 581	5 021	3 684	1 020	238	1 208	42 433
UNKNOWN (NUMBER ON FIRST DAY OF MONTH)									
<b>2006</b>	1 101	602	—	58	4	97	2	125	1 988
<b>2007</b>	962	662	—	46	6	52	2	79	1 809
<b>2008</b>	983	651	—	41	15	41	1	101	1 833
<b>2008</b>									
Mar Qtr	851	586	—	30	17	60	2	112	1 658
Jun Qtr	883	507	—	44	19	61	—	118	1 633
Sep Qtr	952	545	—	49	17	19	—	122	1 704
Dec Qtr	1 247	964	—	42	6	25	3	50	2 336
<b>2009</b>									
Mar Qtr	1 533	1 349	—	57	12	38	3	71	3 062
Jan	1 401	1 257	—	54	9	34	3	84	2 842
Feb	1 581	1 310	—	56	11	37	3	98	3 096
Mar	1 616	1 481	—	61	15	42	3	30	3 248

— nil or rounded to zero (including null cells)

(a) Figures include persons with breached or suspended orders, with the exception of Vic. and Tas.

(b) Figures for the quarter and year for first day of the month counts are calculated as a simple average – see Explanatory Notes, paragraph 5.

(c) Data movements may be influenced by data entry delays – see Explanatory Notes, paragraph 39.

(d) Data prior to the March quarter 2007 may be slightly overstated – see Explanatory Notes, paragraph 42.

(e) Data is subject to processing delays of 4 to 6 weeks - see Explanatory Notes, paragraph 41.

(f) See footnotes c-e.

# APPENDIX EXPERIMENTAL COMMUNITY-BASED CORRECTIONS DATA

*continued*

## A1 PERSONS IN COMMUNITY-BASED CORRECTIONS(a)(b), By Indigenous status *continued*

	NSW	Vic.	Qld	SA(c)	WA(d)(e)	Tas.	NT	ACT	Aust. (f)
PERSONS (NUMBER ON FIRST DAY OF MONTH)									
<b>2006</b>	17 843	7 601	12 124	5 597	5 395	1 184	1 155	1 082	51 981
<b>2007</b>	18 002	7 710	12 584	5 671	5 229	1 159	1 173	1 138	52 665
<b>2008</b>	17 954	7 950	14 120	5 888	5 545	1 143	1 100	1 301	55 001
<b>2008</b>									
Mar Qtr	17 777	7 989	13 645	5 742	5 518	1 144	1 136	1 234	54 185
Jun Qtr	18 089	7 787	14 009	5 840	5 558	1 150	1 152	1 277	54 862
Sep Qtr	17 898	7 874	14 385	5 926	5 557	1 121	1 044	1 347	55 152
Dec Qtr	18 052	8 150	14 443	6 045	5 547	1 158	1 068	1 344	55 806
<b>2009</b>									
Mar Qtr	18 280	8 012	14 328	6 093	5 608	1 195	1 100	1 390	56 006
Jan	18 288	8 073	14 430	6 079	5 568	1 170	1 083	1 384	56 075
Feb	18 216	7 969	14 241	6 109	5 619	1 197	1 112	1 394	55 857
Mar	18 337	7 993	14 313	6 092	5 636	1 217	1 105	1 392	56 085

- (a) Figures include persons with breached or suspended orders, with the exception of Vic. and Tas.
- (b) Figures for the quarter and year for first day of the month counts are calculated as a simple average – see Explanatory Notes, paragraph 5.
- (c) Data movements may be influenced by data entry delays – see Explanatory Notes, paragraph 39.

- (d) Data prior to the March quarter 2007 may be slightly overstated – see Explanatory Notes, paragraph 42.
- (e) Data is subject to processing delays of 4 to 6 weeks - see Explanatory Notes, paragraph 41.
- (f) See footnotes c-e.

# APPENDIX EXPERIMENTAL COMMUNITY-BASED CORRECTIONS DATA

*continued*

## A2 PROPORTION OF PERSONS IN COMMUNITY-BASED CORRECTIONS(a)(b), By Indigenous status

	NSW	Vic.	Qld	SA(c)	WA(d)(e)	Tas.	NT	ACT	Aust. (f)
INDIGENOUS (%)									
<b>2006</b>	16.3	4.3	17.7	13.3	32.9	11.9	73.3	7.4	17.3
<b>2007</b>	17.8	4.4	18.0	14.4	31.4	11.8	75.0	8.8	17.8
<b>2008</b>	17.7	4.4	18.1	15.8	32.7	11.5	77.0	9.6	18.1
<b>2008</b>									
Mar Qtr	17.6	4.4	18.0	14.8	31.9	11.5	75.5	8.6	17.8
Jun Qtr	17.6	4.5	18.2	15.3	33.1	11.2	75.8	9.1	18.1
Sep Qtr	17.7	4.4	18.1	16.3	32.6	11.5	78.8	9.7	18.1
Dec Qtr	17.8	4.4	18.1	16.6	33.3	11.9	78.1	11.1	18.2
<b>2009</b>									
Mar Qtr	17.5	4.7	18.7	16.6	34.4	12.8	78.4	10.8	18.5
Jan	17.7	4.7	18.4	16.6	34.3	13.0	78.3	10.7	18.4
Feb	17.6	4.8	18.7	16.5	34.5	12.6	78.8	10.5	18.6
Mar	17.3	4.8	19.1	16.6	34.4	12.7	78.2	11.1	18.6
NON-INDIGENOUS (%)									
<b>2006</b>	77.5	87.8	82.3	85.6	67.0	79.9	26.6	81.0	78.9
<b>2007</b>	76.9	87.0	82.0	84.8	68.5	83.7	24.8	84.3	78.8
<b>2008</b>	76.8	87.4	81.9	83.5	67.0	84.9	22.9	82.6	78.6
<b>2008</b>									
Mar Qtr	77.6	88.2	82.0	84.7	67.8	83.3	24.3	82.3	79.1
Jun Qtr	77.5	89.0	81.8	83.9	66.6	83.4	24.2	81.7	78.9
Sep Qtr	76.9	88.7	81.9	82.9	67.1	86.9	21.2	81.2	78.8
Dec Qtr	75.3	83.8	81.9	82.7	66.5	86.0	21.7	85.2	77.6
<b>2009</b>									
Mar Qtr	74.1	78.4	81.3	82.5	65.4	84.1	21.3	84.1	76.0
Jan	74.6	79.8	81.6	82.5	65.6	84.1	21.4	83.2	76.5
Feb	73.7	78.8	81.3	82.6	65.3	84.3	21.0	82.4	75.9
Mar	73.9	76.7	80.9	82.4	65.4	83.8	21.5	86.8	75.7
UNKNOWN (%)									
<b>2006</b>	6.2	7.9	—	1.0	0.1	8.2	0.2	11.6	3.8
<b>2007</b>	5.3	8.6	—	0.8	0.1	4.5	0.1	6.9	3.4
<b>2008</b>	5.5	8.2	—	0.7	0.3	3.6	0.1	7.7	3.3
<b>2008</b>									
Mar Qtr	4.8	7.3	—	0.5	0.3	5.2	0.2	9.1	3.1
Jun Qtr	4.9	6.5	—	0.8	0.3	5.3	—	9.2	3.0
Sep Qtr	5.3	6.9	—	0.8	0.3	1.7	—	9.1	3.1
Dec Qtr	6.9	11.8	—	0.7	0.1	2.1	0.3	3.7	4.2
<b>2009</b>									
Mar Qtr	8.4	16.8	—	0.9	0.2	3.2	0.3	5.1	5.5
Jan	7.7	15.6	—	0.9	0.2	2.9	0.3	6.1	5.1
Feb	8.7	16.4	—	0.9	0.2	3.1	0.3	7.0	5.5
Mar	8.8	18.5	—	1.0	0.3	3.5	0.3	2.2	5.8

— nil or rounded to zero (including null cells)

(a) Figures include persons with breached or suspended orders, with the exception of Vic. and Tas.

(b) Figures for the quarter and year for first day of the month counts are calculated as a simple average – see Explanatory Notes, paragraph 5.

(c) Data movements may be influenced by data entry delays – see Explanatory Notes, paragraph 39.

(d) Data prior to the March quarter 2007 may be slightly overstated – see Explanatory Notes, paragraph 42.

(e) Data is subject to processing delays of 4 to 6 weeks - see Explanatory Notes, paragraph 41.

(f) See footnotes c-e



## GLOSSARY

<b>Bail</b>	This is generally a pre-sentence option where a person is released into the community for a period before they appear in court for trial or final sentencing. Bail orders can require a financial surety to be lodged with the court, and a number of conditions including supervision and residential requirements designed to ensure the re-appearance of the person at court. Bail counts are available only in states and territories where bail orders are supervised by corrective services. Bail is a sub-category of Supervision where the person is under the supervision of corrective services ( <i>see</i> Supervision).
<b>Community-based corrections</b>	This refers to the community-based management of court-ordered sanctions, post-prison administrative arrangements and fine conversions, which principally involve the provision of one or more of the following activities: supervision, programs or community work.
<b>Community service</b>	This category of community-based corrections orders includes sentencing options requiring offenders to undertake a specified number of hours of unpaid, supervised work to benefit the community on an approved project. Community service is a sub-category of Reparation ( <i>see</i> Reparation).
<b>Corrective services custody</b>	Confinement in a place intended primarily for the purpose of confining prisoners, such as a prison, prison farm, Periodic Detention Centre or Community Custody Centre.
<b>Federal sentenced prisoner</b>	Persons charged and sentenced under a Commonwealth statute or transferred from another country to serve their sentence in Australia.
<b>Fine option</b>	A community-based sentence type where the offender is serving a sentence for default of a fine. In most jurisdictions this order type requires an offender to complete community service as a reparatory act. Fine option is a sub-category of Reparation ( <i>see</i> Reparation).
<b>Full-time prison custody</b>	A type of custody where a prisoner is required to be held in custody on a full-time basis. This includes prisons, Queensland Community Custody Centres and work outreach camps. Full-time prison custody excludes periodic detention ( <i>see</i> Periodic detention).
<b>Home detention</b>	( <i>see</i> Restricted movement)
<b>Indigenous prisoner</b>	A prisoner who identifies as being of Aboriginal or Torres Strait Islander origin, or both.
<b>Legal status</b>	A person may be either sentenced or unsentenced depending on the warrant(s) or court order(s) that provide the legal basis for the administration of the person through the criminal justice system.
<b>Open custody</b>	Refers to prisoners housed in minimum security custodial facilities that do not require them to be confined by a secure perimeter physical barrier, irrespective of whether a physical barrier exists.
<b>Parole</b>	A parole order is made following a period of imprisonment and requires an offender to be subject to supervision in the community. Additional conditions may also be applied such as programs, counselling or drug testing. Parole is a sub-category of Supervision ( <i>see</i> Supervision).
<b>Periodic detention</b>	A type of custody or order where a sentenced prisoner is required to be held in custody on a part-time basis. Currently this consists of two consecutive days in a one-week period, while remaining at liberty during the rest of the week.
<b>Prisoner</b>	A person held in custody. For the purposes of this collection, prisoners are those whose confinement is the responsibility of a corrective services agency.
<b>Remand</b>	( <i>see</i> Unsentenced)
<b>Reparation</b>	Reparation refers to all offenders with an order that requires them to undertake unpaid, justice agency-approved community service work.

## GLOSSARY *continued*

<b>Restricted movement</b>	This refers to persons who are subject to a system of restricted movement, including supervision and/or electronic monitoring. This category includes home detention that may restrict residence to a nominated place. Restricted movement can be either a pre-sentence or post-sentence order.
<b>Secure custody</b>	Refers to prisoners housed in medium or maximum security custodial facilities requiring them to be confined by a secure physical barrier.
<b>Sentenced</b>	A legal status indicating that a person has received a custodial or community-based order from a court in response to a conviction for an offence.
<b>Sentenced prisoner reception</b>	Refers to entry into corrective services custody from the community, having received a sentence of imprisonment as an outcome of a court proceeding; or persons who are sentenced to custody while in custody on remand (i.e. changed status from a remand to a sentenced prisoner); or persons entering custody as a result of defaulting on the payment of a fine. Sentenced prisoners in custody who receive a further sentence of imprisonment are not counted as sentenced receptions.
<b>Sentenced probation</b>	A supervision order made following an original sentence handed down in court following conviction. A probation order generally requires 'good behaviour' and compliance with the directions of supervisors. The order may also require compliance with conditions such as program attendance and residential requirements.
<b>Supervision (compliance)</b>	This includes community-based orders other than those categorised as restricted movement or reparation (e.g. parole, bail and sentenced probation).
<b>Unsentenced</b>	A legal status indicating that a person is confined to custody or supervision while awaiting the outcome of their trial.



## FOR MORE INFORMATION . . .

## INTERNET

**www.abs.gov.au** the ABS website is the best place for data from our publications and information about the ABS.

## INFORMATION AND REFERRAL SERVICE

Our consultants can help you access the full range of information published by the ABS that is available free of charge from our website. Information tailored to your needs can also be requested as a 'user pays' service. Specialists are on hand to help you with analytical or methodological advice.

## PHONE

1300 135 070

## EMAIL

client.services@abs.gov.au

## FAX

1300 135 211

## POST

Client Services, ABS, GPO Box 796, Sydney NSW 2001

## FREE ACCESS TO STATISTICS

All statistics on the ABS website can be downloaded free of charge.

## WEB ADDRESS

**www.abs.gov.au**